

# OPTITEX

## Optitex Installation Guide (For Administrators)

DESIGN. DEVELOP. PRODUCE.

## Table of Contents

Overview .....	2
Optitex File Locations.....	2
Optitex Full Installation.....	4
Available Separate Installations.....	4
Prerequisites .....	5
User preferences, settings and customizations.....	6
Installing Optitex Full Package .....	7
Installing the 3D Sample Pack.....	14
Installing the Language Pack.....	18
Installing a License Server .....	21
Activating Your License .....	24
Configuring Remote Workstations.....	29
The License Server .....	29
License Clients.....	29
Managing and Controlling Your Licenses.....	29
Advanced Nesting License Keys runtime Installation .....	31
Separate Installation Packages .....	32
Installing CutPlan .....	32
Installing Optitex 2D Plugins .....	37
Installing Runway Viewer.....	41
Installing Optitex Viewer.....	44
Uninstalling Optitex .....	49
Silent Installations.....	50
General Syntax for Silent Installations.....	50
Installing a Service Pack (Update) Silently .....	51

## Overview

This document covers the installation and administration of the Optitex desktop products listed below. Use it for both standalone installations as well as a wider deployment.

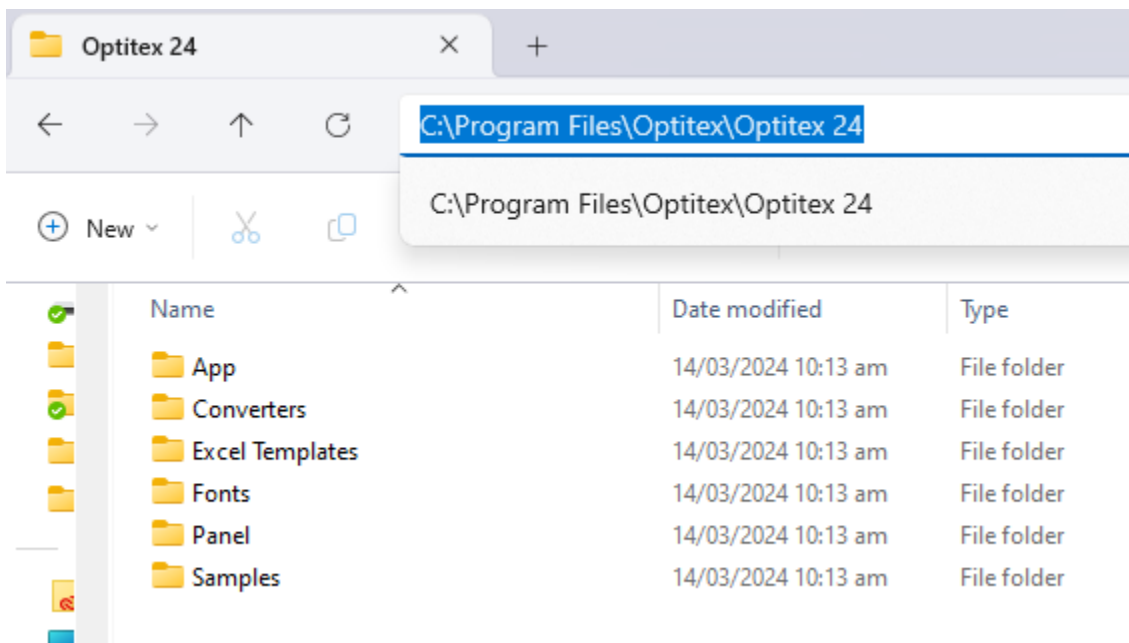
This document is always updated to the latest released Optitex version; therefore, the process may be different if you are installing a previous version.

Optitex recommends always using the latest version to include all improvements and ensure the best possible user experience.

## Optitex files locations

Optitex files are installed in two locations on your computer:

1. The main Optitex folder contains all the installation files, including languages, default fabrics, default palettes, fonts, 3D Avatars, PDS/Marker samples and all Optitex utilities. These are installed by default in your C drive (located in Program Files, depending on the Optitex version you installed):

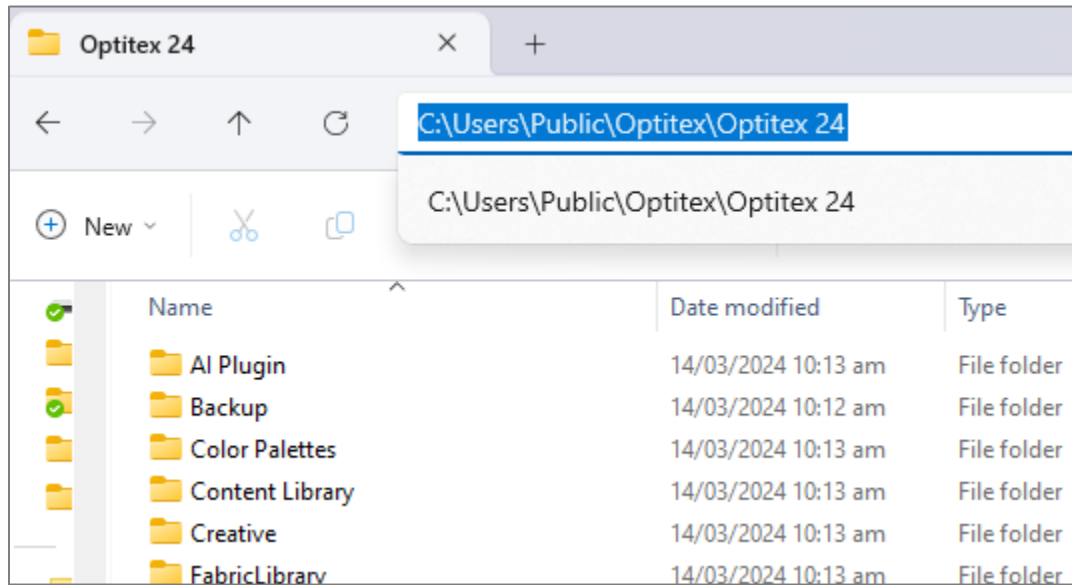


### Optitex installation Folder:

*C:\Program Files\Optitex\Optitex 24*

***Note that Version 24 is only available in 64-bits***

- The second Optitex folder includes the content library, backup files, license files, and configuration files. These are installed in your C drive:



**Optitex content & configuration folder**

*C:\Users\Public\Optitex\Optitex 24*

## Optitex Full Installation

The following components are included automatically when installing the **Optitex Suite**:

- Full Optitex Suit (PDS/Marker/3D)
  - Content Library (Seam and Stitch Library, Button Shapes)
  - Fabric List
  - Color Palettes
  - Texture Library
  - Avatars (Adam + Eva only)
  - Online Support (Optional, using Team Viewer)
  - Avatar Editor
  - Runway Viewer
  - Optitex Viewer
  - Fabric Meter
- Direct converters: Convert commonly used CAD system files directly to Optitex format, or export from Optitex to other formats.  
Note: the converters are not supported and maintained anymore. You can use them as they are.
  - Material Converter
  - Utilities
    - License Manager
    - Optitex Shell: batch utility
    - Settings Manager
    - OCC: Output Control Center: used to configure and manage plotting and cutting.

The following components are included in the full Optitex installation, but are **optional**:

- Nesting Pack: Nesting algorithms and drivers
- Team Viewer (Online support remote connection)

## Available Separate Installations

- Language pack
- 3D Sample Pack
- Fabric Meter
- 2D Plugins
- CutPlan
- Network License Manager
- SDK
- Runway Viewer
- Optitex Viewer
- Optitex 3D Revu

- 3D Design for Illustrator (3DDI)
- OCloud Link

Optitex full installations, as well as the service packs, can be applied both attended and unattended. Refer to the [Silent Installation](#) section to learn more about available switches.

## Prerequisites

Before installing Optitex on your computer, make sure your PC is compatible with Optitex.

## [System Requirements](#)

### [Supported Operating Systems](#)

Use the following guidelines to avoid installation issues:

1. Download the installation files, (unzip (if zipped) and have them ready.
2. **If you have a hardware key, Do not** insert it before the installation. The installation package contains the license key drivers.



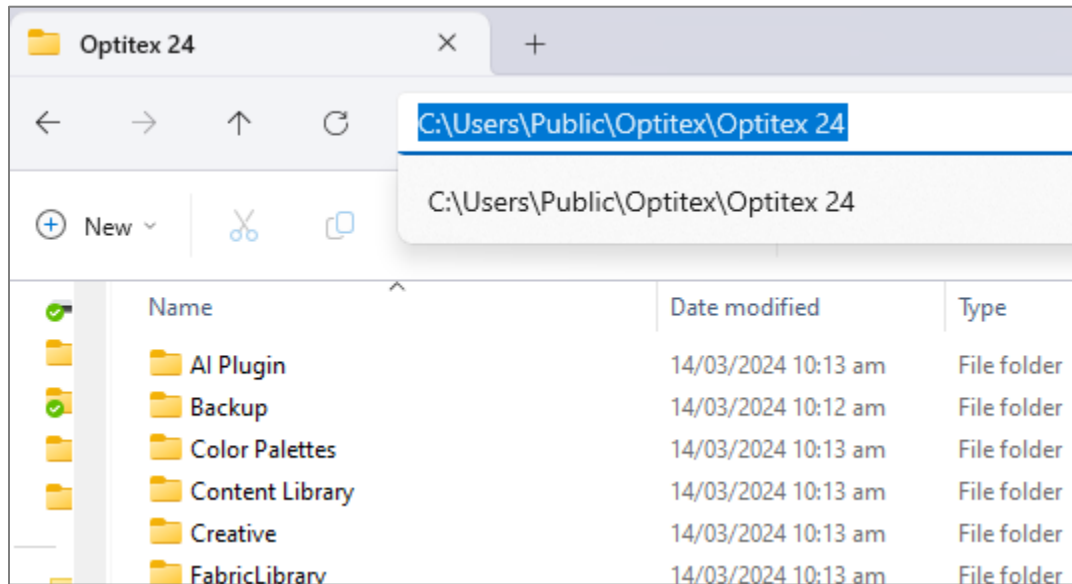
**Note:** Existing older major versions may be left intact. You may use them for as long as needed before removing them.

## User preferences, settings and customizations

User preferences, settings and customizations are saved in the file system and in the registry. For example, changes made by the user to **Tools > Preferences** are written to the Optitex[version#].ini file.

The Windows folder containing this and other user generated files is:

*C:\Users\Public\Optitex\Optitex 24*



## Installing Optitex Full Package

The Optitex full installation package should be used for new versions, when installing from scratch, or when you want to modify your existing setup.

The installation packages should be downloaded.

The full installation package should be executed using the **EXE** file (and not the **MSI** file).

The **Optitex installation** requires the following Microsoft components:

- Microsoft .NET Framework 4.7.2 Full
- Microsoft Visual C++ 2019 Redistributable Package (x64)
- Microsoft Visual C++ 2019 Redistributable Package (x86)

If your system is missing one or more of these components, they will be installed by the Optitex setup prior to the Optitex apps.



**Note:** A reboot may be required, depending on your existing windows and Microsoft Visual C++ Redistributable versions



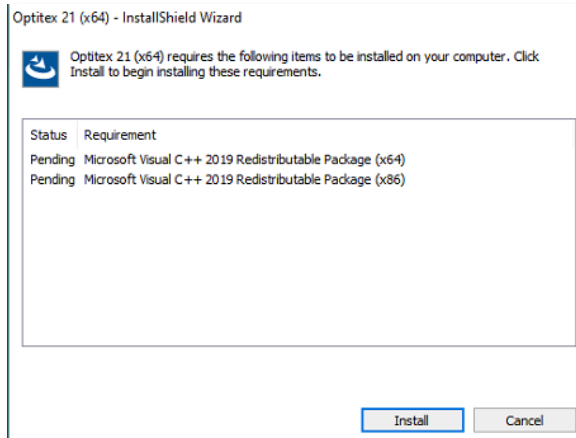
**Important:** The available **MSI** installation file should only be used in [command line](#) installations. It does not supply the above Microsoft components. Installing the **MSI** on a system missing one or more of the prerequisites will result in a non-usable Optitex installation.

### *To run the full Optitex installation:*

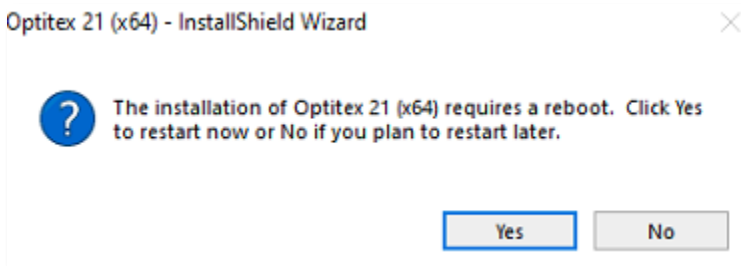
1. Run the full installation package (recommended: right click and select **Run as Administrator**).

If you are missing any requirements necessary for installation, a message appears specifying the missing prerequisites. Click **Install** to proceed.

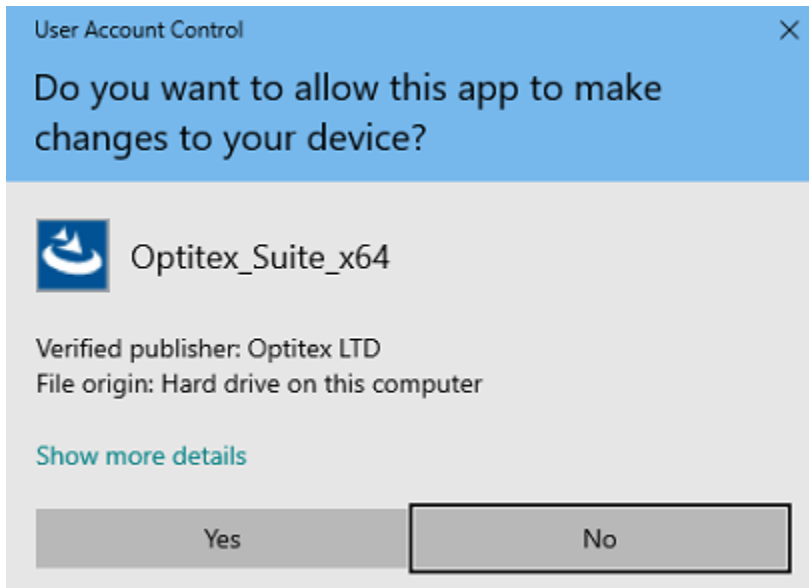




Following the installation of the missing components, a reboot may be required prior to the Optitex installation. This is depending on your existing windows and MS VCRedist versions.

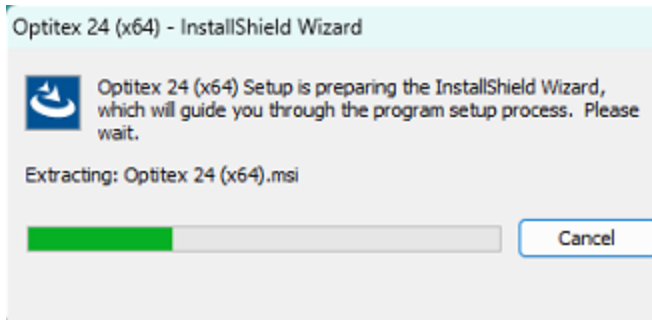


Once you have all the requirements, the Optitex installation automatically begins. Depending on your permissions, the User Account Control warning may show:

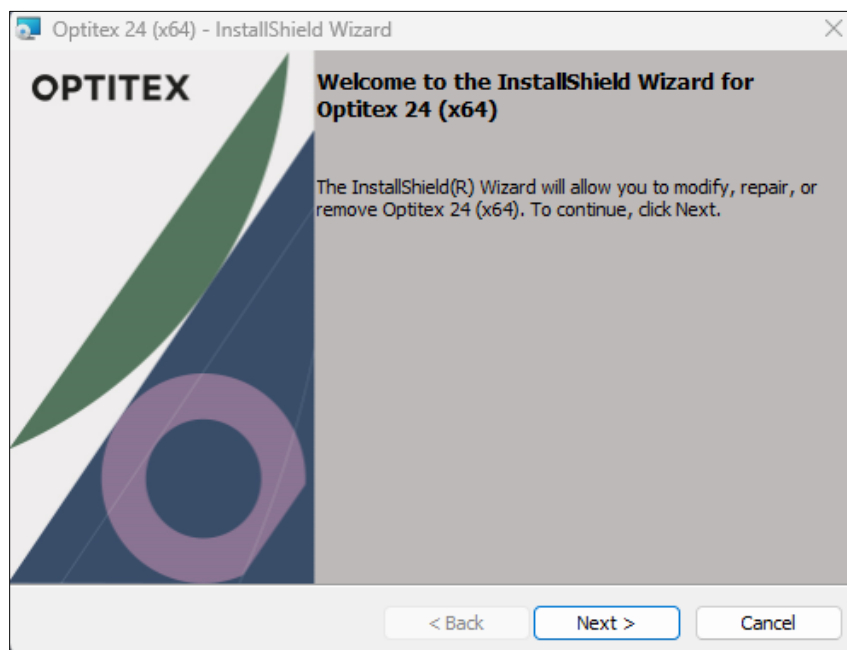


2. Click Yes to proceed.

The InstallShield wizard is preparing:

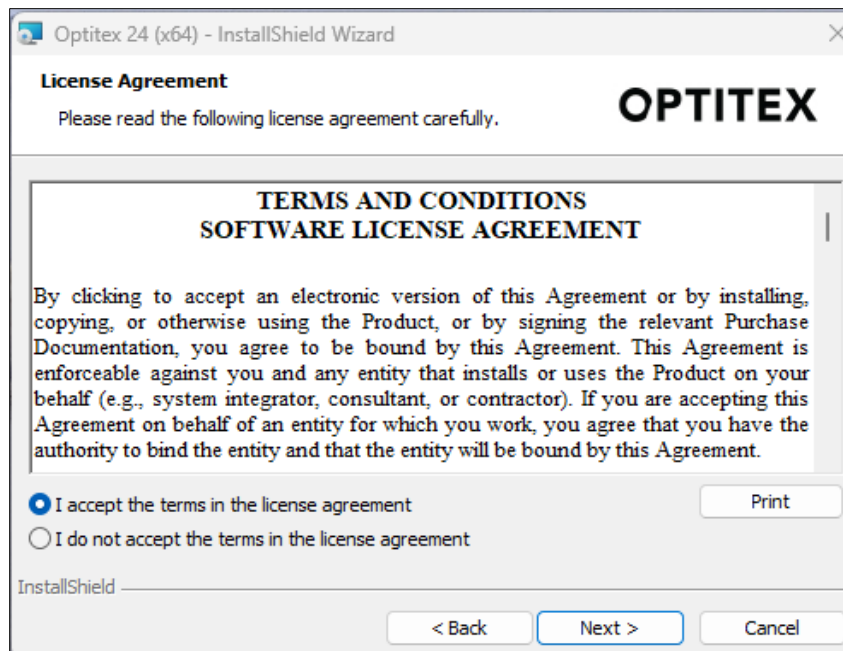


Then the he **Welcome Screen** appears:



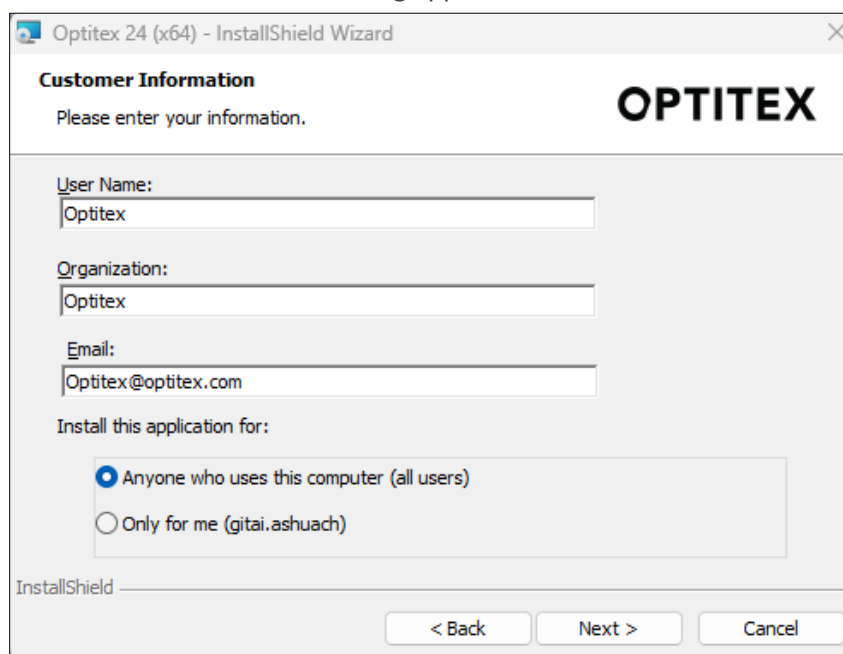
3. Click **Next**.

The **License Agreement** dialog appears:



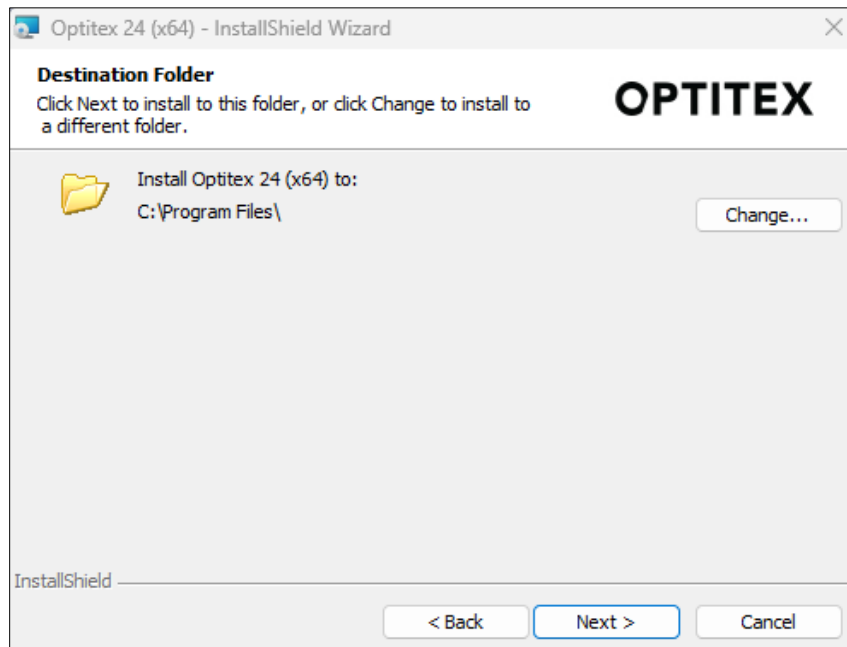
4. Read the license agreement, then select the **I accept the terms in the license agreement** radio button. Click **Next**.

The **Customer Information** dialog appears:



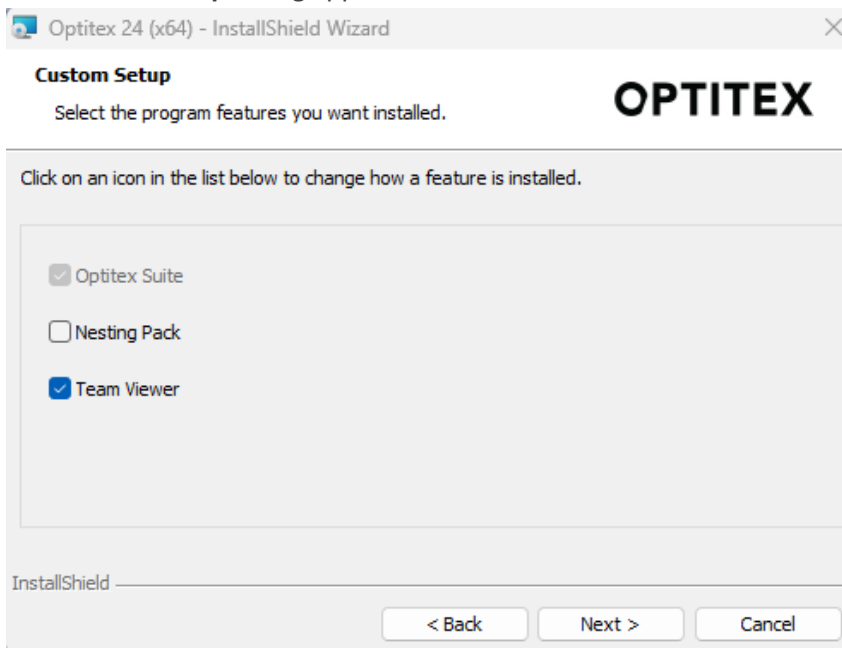
5. Enter your personal information including your name, organization and email.
5. In the **Install this application for** area, select whether to install the application for anyone who uses this computer, or for the current user only.
6. Click **Next**.

The **Destination Folder** dialog appears:



7. To set the installation folder to another location, click **Change** and set a different folder.
8. Click **Next** to accept the default folder location, or to proceed after setting a different folder.

The **Custom Setup** dialog appears:



9. Select the required components:
  1. **Optitex Suite**: Installs all Optitex applications.



**Note:** The Optitex Suite is always selected (mandatory).

**2. Nesting Pack:** Select **only** if you use Nest++2/Nest++Pro (requires an Optitex license).

**3. Team Viewer:** (recommended) Allows you to get online support from Optitex when you need it.



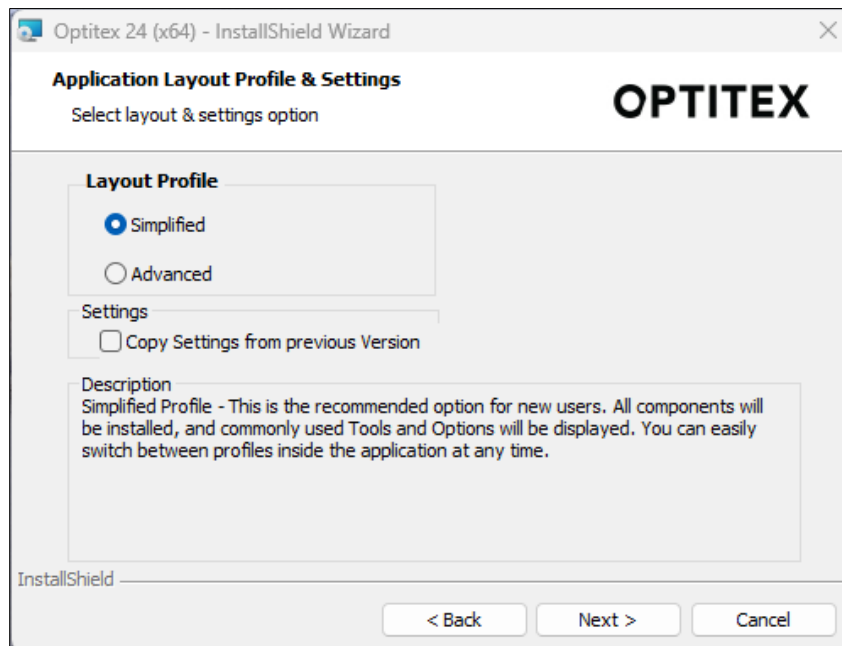
**Note:** If you need to add a component later (e.g., Nesting Pack), you can run the same installation package again, chose **Modify**, and select the required component. If the component was already installed and you unselect it, the installed component will be removed.

10. Click **Next**.

The **Application Layout Profile & Settings** dialog appears. Here you can decide which type of profile you want to use when opening the PDS and define if you want to copy your settings from the previous version.



**Note:** You can always change the user profile via the **Customization** dialog in PDS later.



11. In the **Layout Profile** area, select one of the following options:

- **Simplified Profile:** This is recommended for new users and includes commonly used tools and options to get you started. (This is the default profile).
- **Advanced Profile:** This is recommended for advanced users and includes all the tools and options that are available in the PDS.

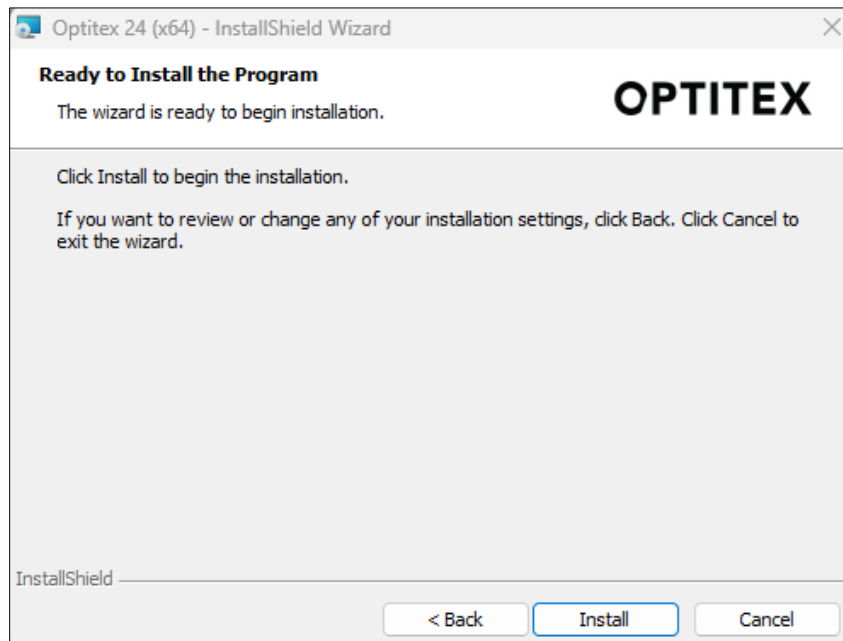
12. In the **Settings** area, select the **Copy Settings from Previous Version** checkbox, if you want to copy your settings and customizations from the previous version which is installed on your machine. If you prefer, you can use the Settings Manager tool (a separate application that allows you to specify the exact settings you want to copy). For more information, see [Settings Manager Tool](#).



**Note:** Due to a technical issue, if you want to copy your 3D settings from a previous version, it is recommended you use the Settings Manager tool instead of selecting this checkbox. You must first open PDS , close it and then run the **Settings Manager** tool from the start menu.

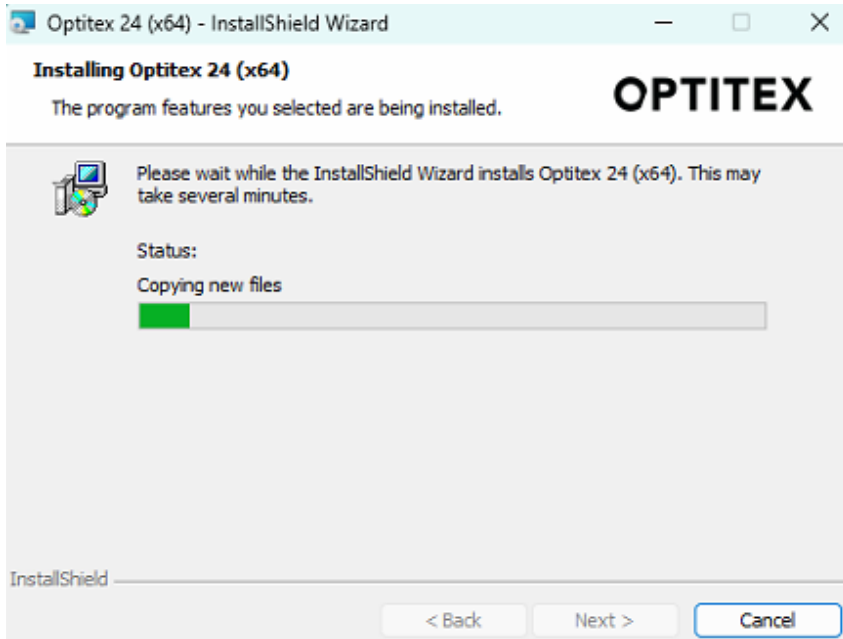
13. Click **Next**.

The **Ready to Install the Program** dialog appears:

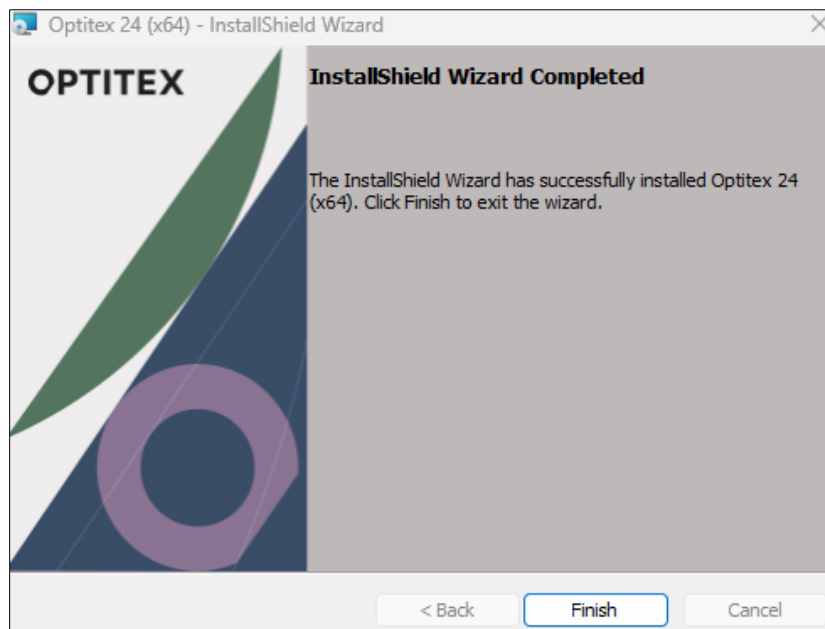


14. Click **Install**.

The installation process starts:



Once the installation is complete, the **InstallShield Wizard Completed** message appears:



15. Click **Finish**.
16. Proceed with [activating your license key](#) (if required).

## Installing the 3D Sample Pack

Starting from Version O21, the Sample Pack includes only 3D and is now called **3D Sample Pack**.

The 3D sample pack includes all avatars and miscellaneous items, except for Adam and Eva which are already included in the basic package. It also provides 3D PDS sample files.

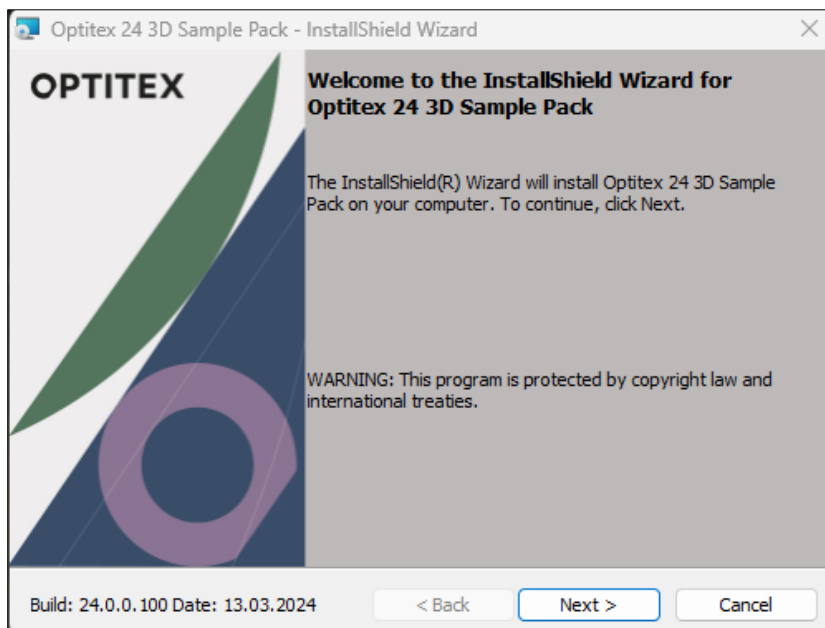


Note: The 2D Marker & PDS samples are provided in a separate zipped package on the [Optitex downloads](#) page.

This section describes how to install the 3D Sample Pack.

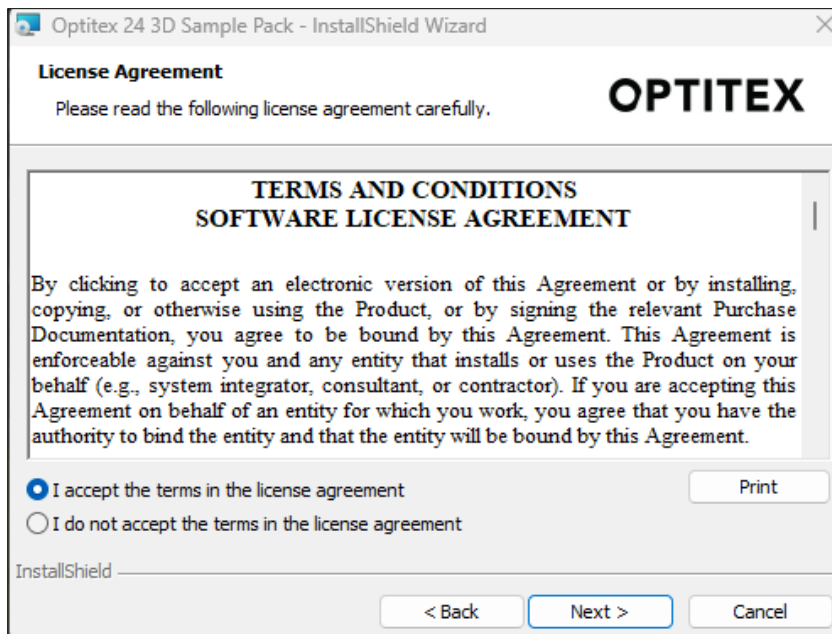
*To install the 3D Sample Pack:*

1. Run the downloaded Sample Pack setup file. (Recommended: right click and select **Run as Administrator**).
2. The **InstallShield Wizard** dialog appears and the files are extracted to your computer.

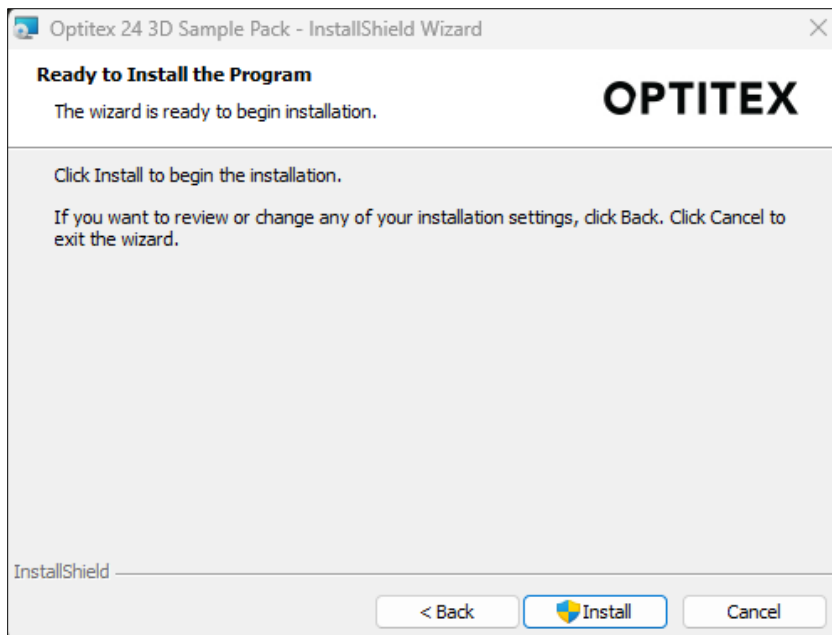


3. Click **Next** to begin the installation.

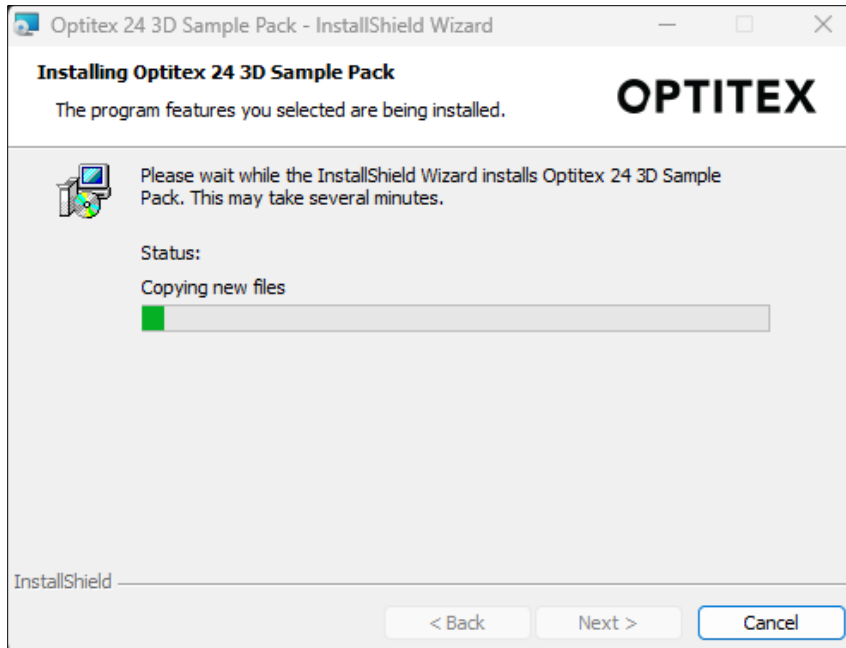




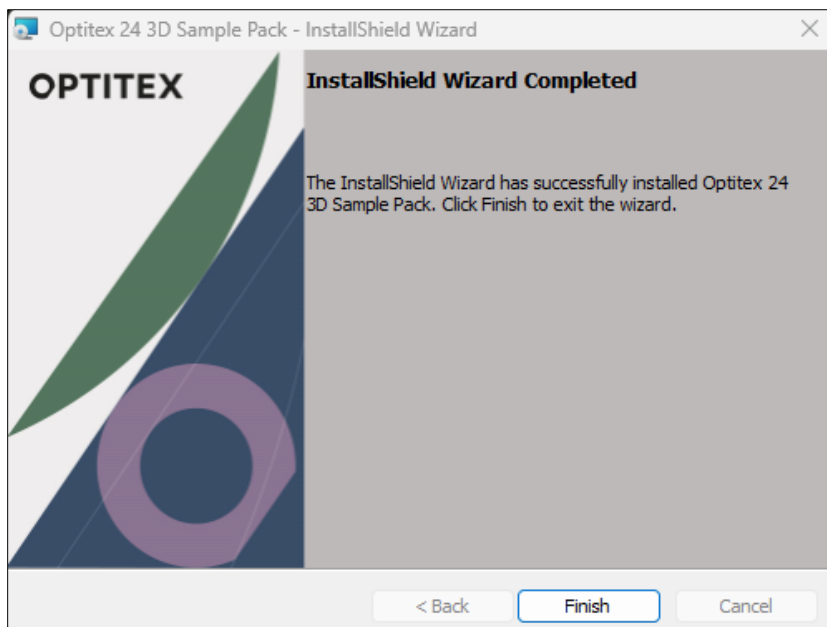
The **License Agreement** dialog appears. Select the **I accept the terms in the license agreement** radio button, then click **Next**.



4. Click **Install** to begin the installation:



5. Once the installation is complete the **InstallShield Wizard Completed** dialog appears. Click **Finish** when you are done.



## Installing the Language Pack

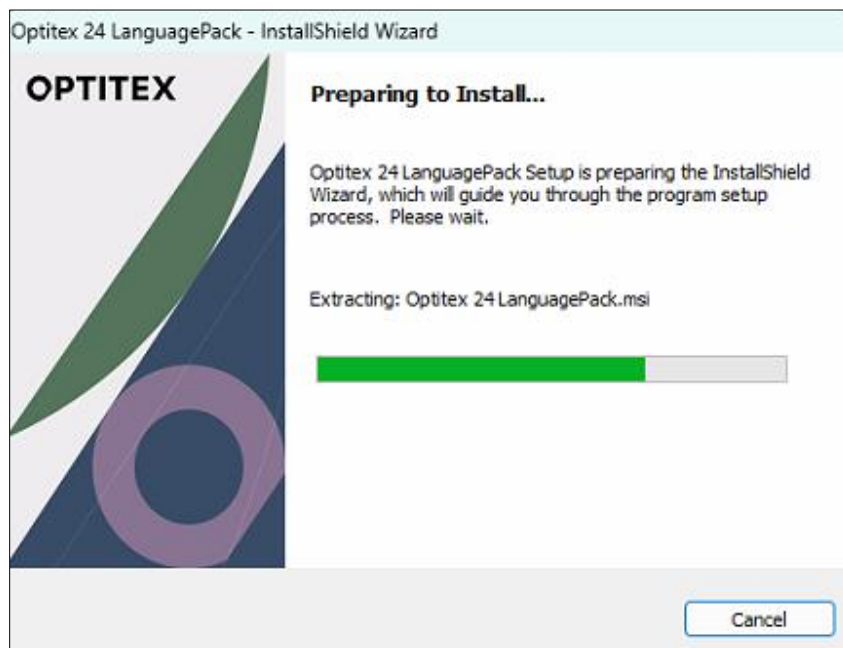
Starting from version 21, the main installation package now comes in English only, without the alternative UI languages. The translations and the language selection utility are installed in a separate package

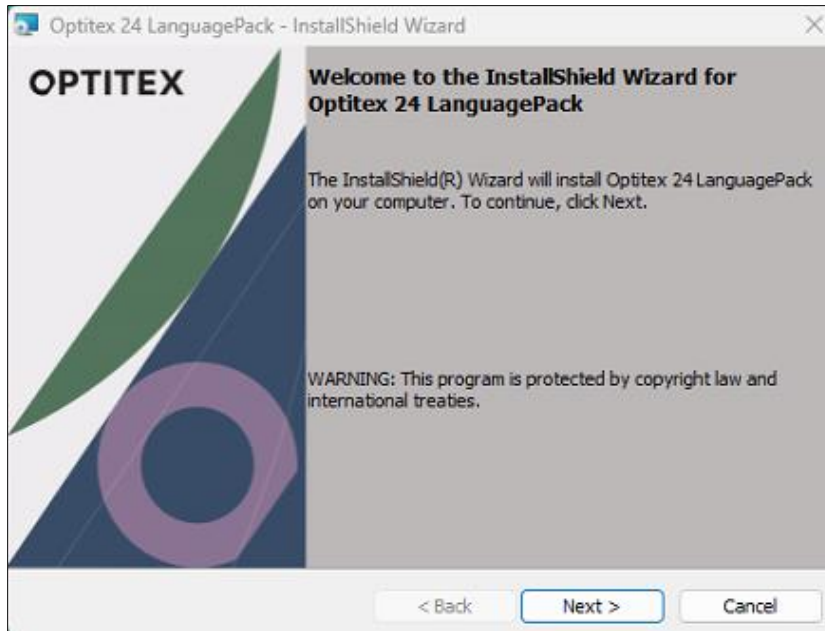


**Note:** The instructions in this section are relevant to version 21.0 and above

### To install the Language Pack:

1. Download the Optitex Language pack installation package.
2. Run the file named *Optitex\_Language\_Pack.exe* . (recommended: **right click and select Run as Administrator**).

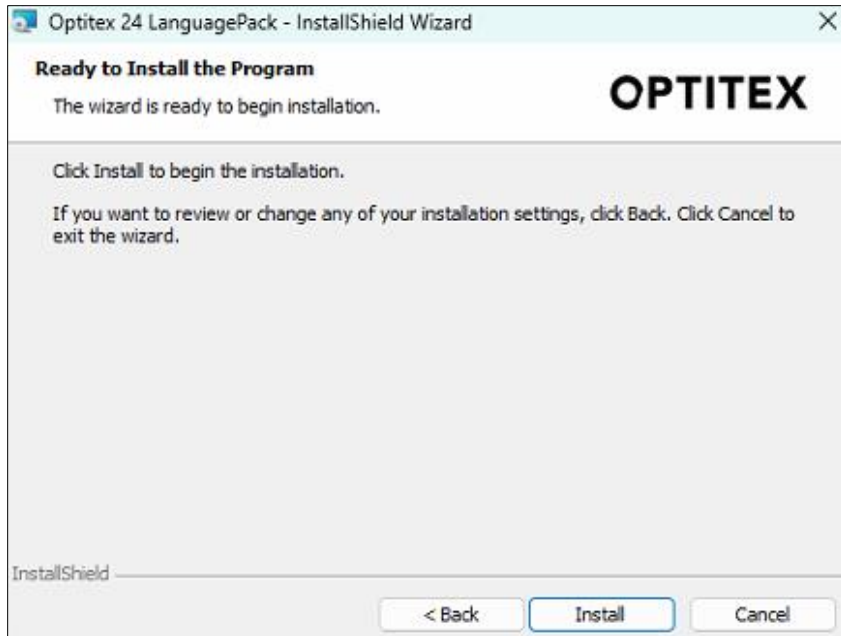




3. Click **Next** to start the installation.

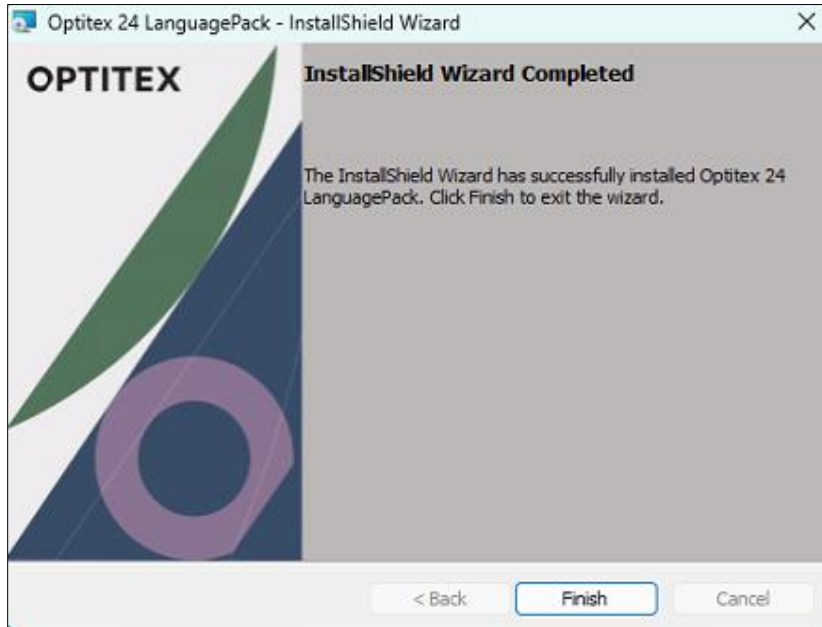


4. Click the **I accept the terms in the license agreement** radio button.
5. Click **Next**.



6. Click **Install** to start the installation.

Once the installation is complete a message appears informing you that the setup was successful:



7. Click **Finish**.

All alternative user interface languages are now available.

## Installing a License Server

This section describes how to install an Optitex license server and how to activate the license. This package is used when you want to install only the licensing components on a network server (and avoid the full Optitex installation). All the Optitex client machines will get their licenses from this server.

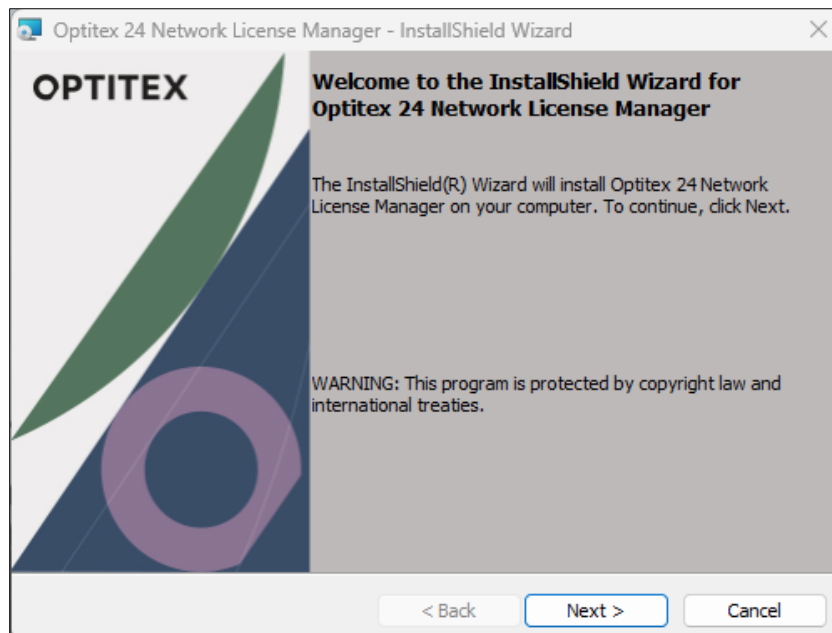
This installation package supports the Optitex physical or a software network key, as well as the advanced nesting key, so the server can also provide nesting licenses over the network when available.



**Note:** The instructions in this section are relevant to version 15.5 and above.

### To install a license server:

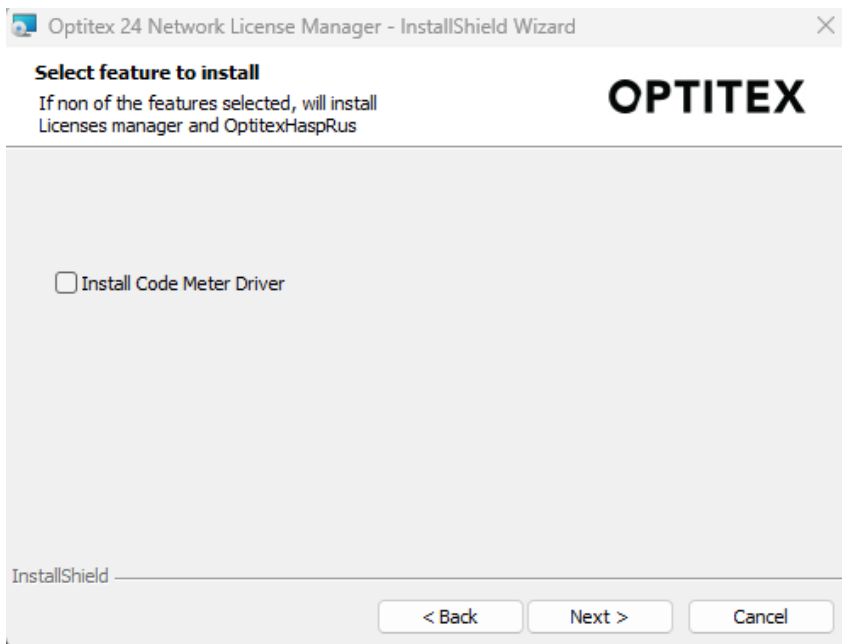
1. Download the Optitex Network License Manager installation package.
2. Run the file named *Optitex Network License Manager.exe*.



3. Click **Next** to start the installation.

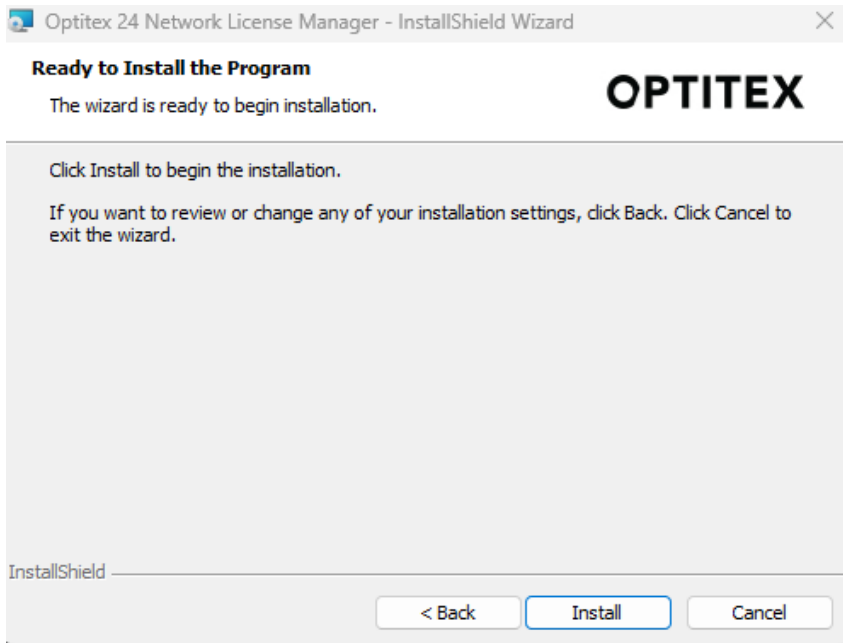


4. Click the **I accept the terms in the license agreement** radio button.
5. Click **Next**.

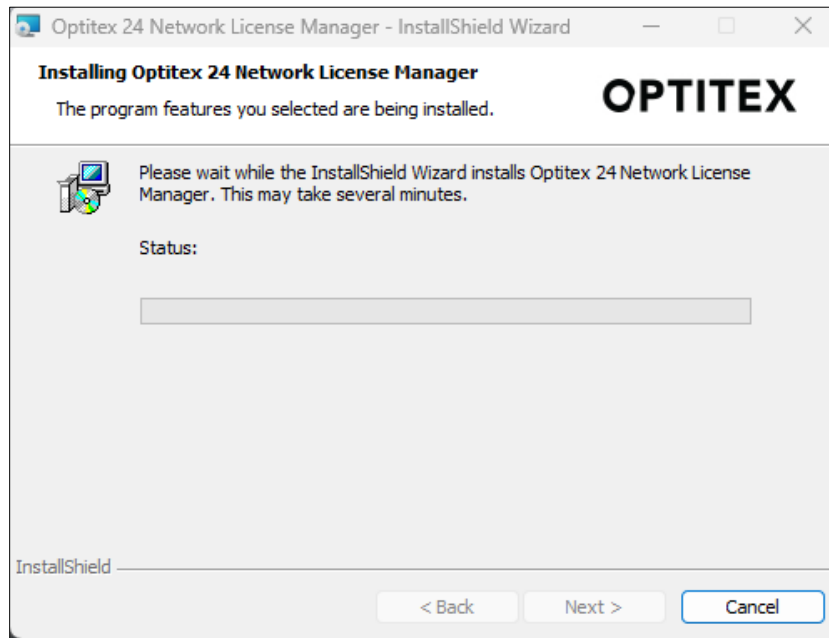


**Note:** Add the Code Meter driver **Only** if you have floating nesting licenses to be provided from the server..

6. Click **Next**.

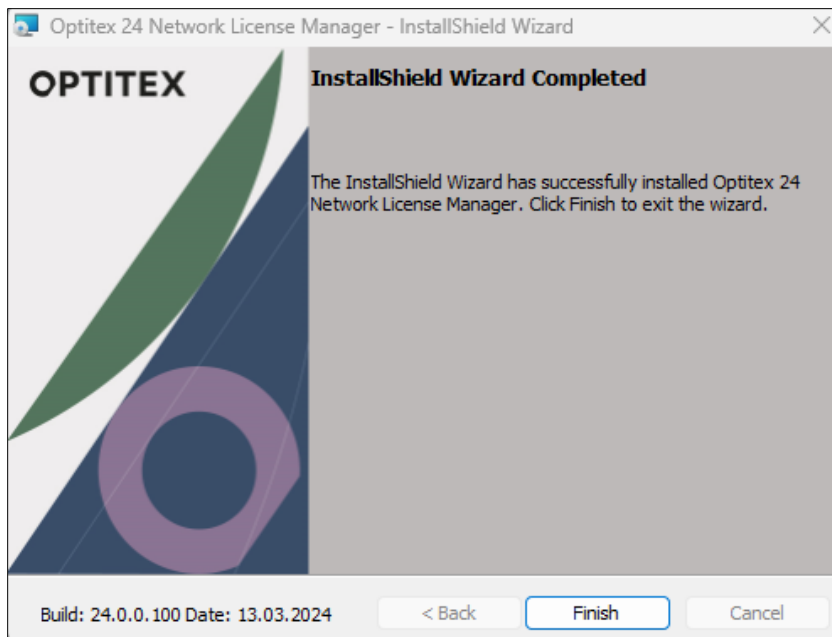


7. Click **Install** to begin the installation.



Once the installation is complete a message appears informing you that the setup was successful:

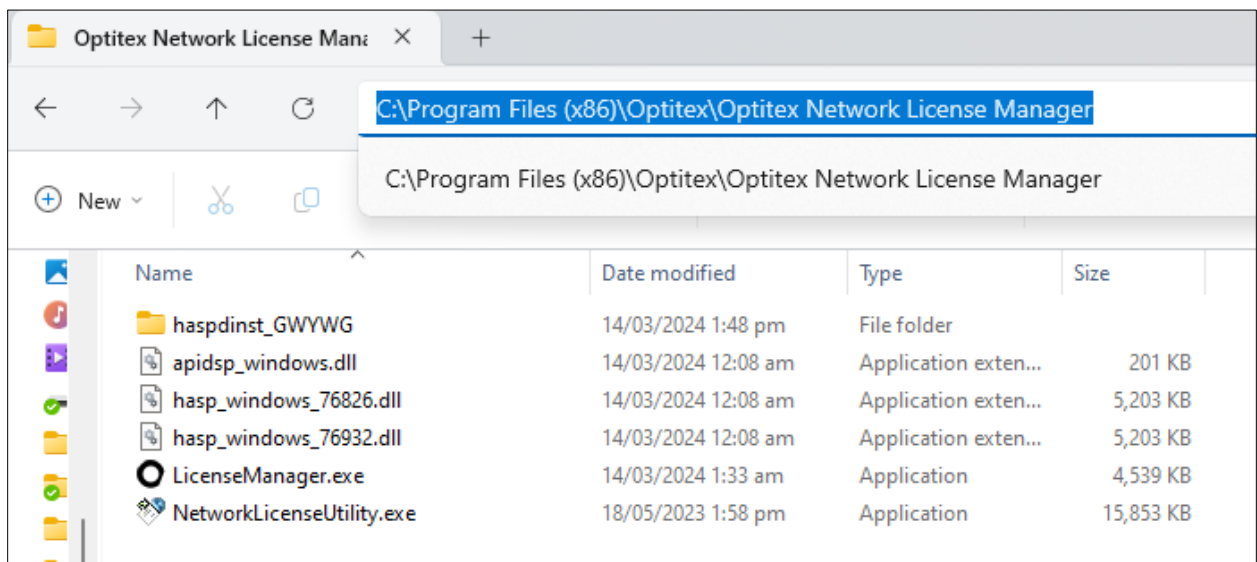




8. Click **Finish**.

You can now activate your license.

The Network license manager files are installed on your computer:

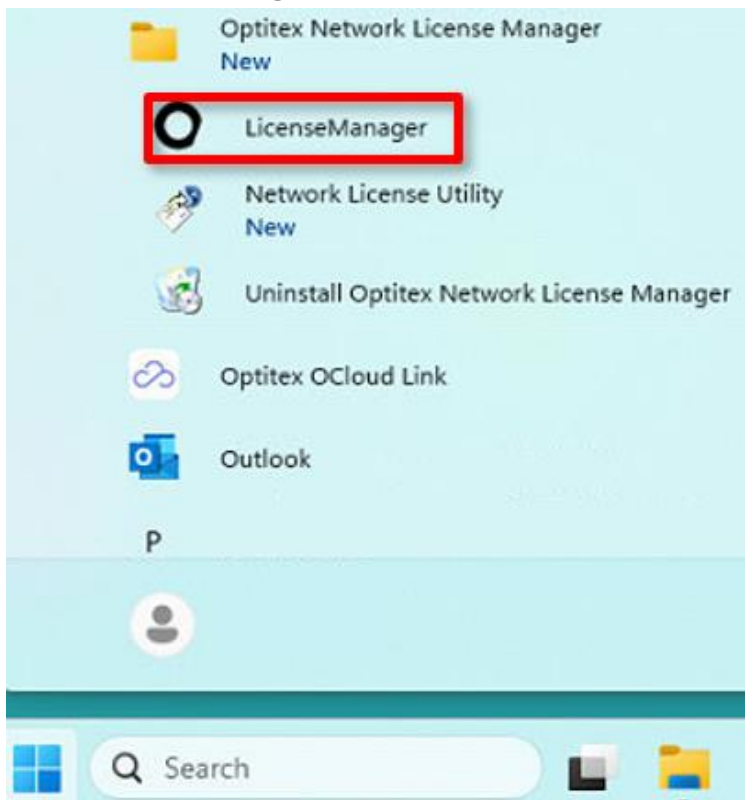


## Activating Your License

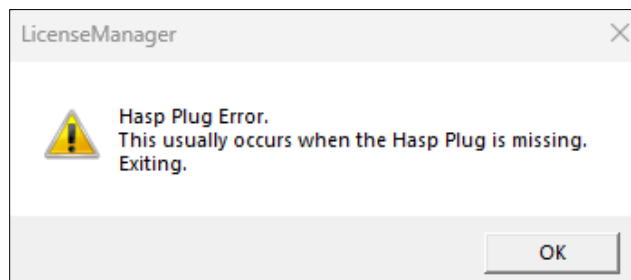
After installing the Optitex network license manager, you should proceed with activating your license. For this you must have either a product key string (provided by Optitex) or a physical key.

*To activate your license:*

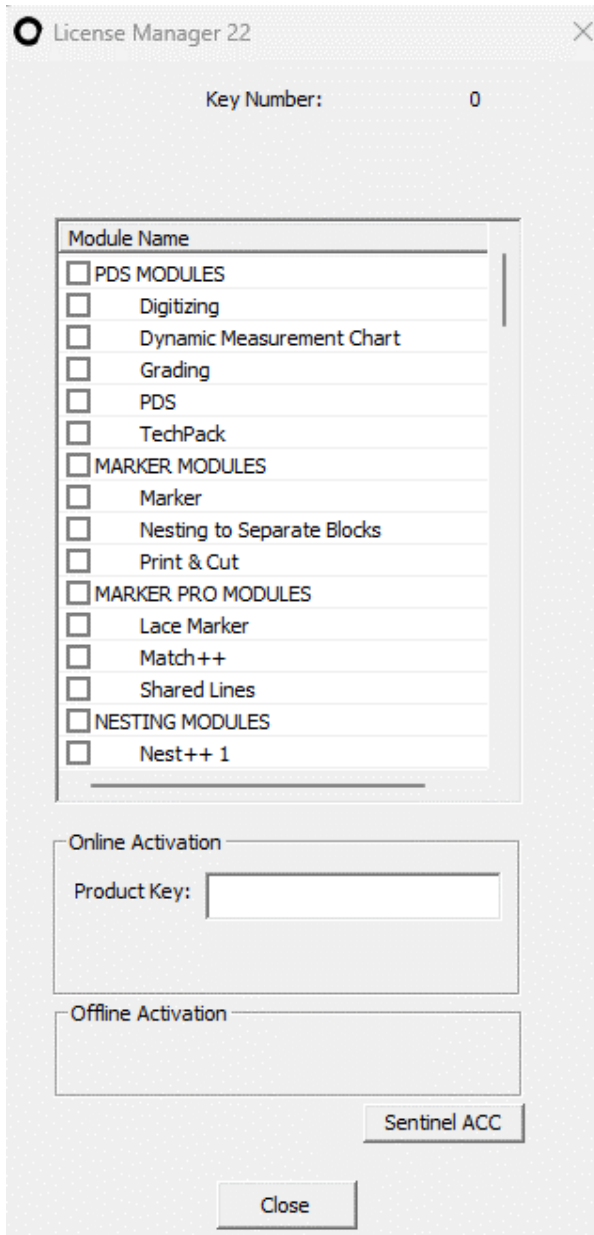
1. If you are using hardware (a physical key), insert it into a USB port on your server.
2. Wait for the system to accommodate the new USB device. When ready, the key light turns on.
3. Run the **License Manager**:



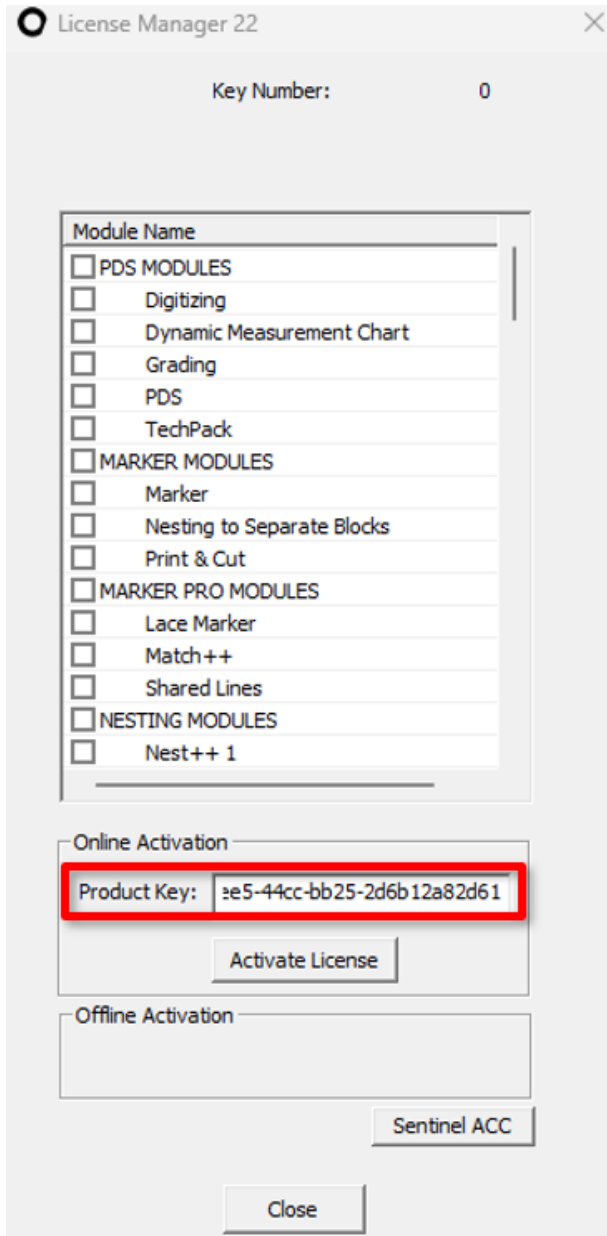
If you are installing a virtual (software) key for the first time, the following warning will pop up. You can ignore and continue by clicking **OK**.



The **License Manager** appears:

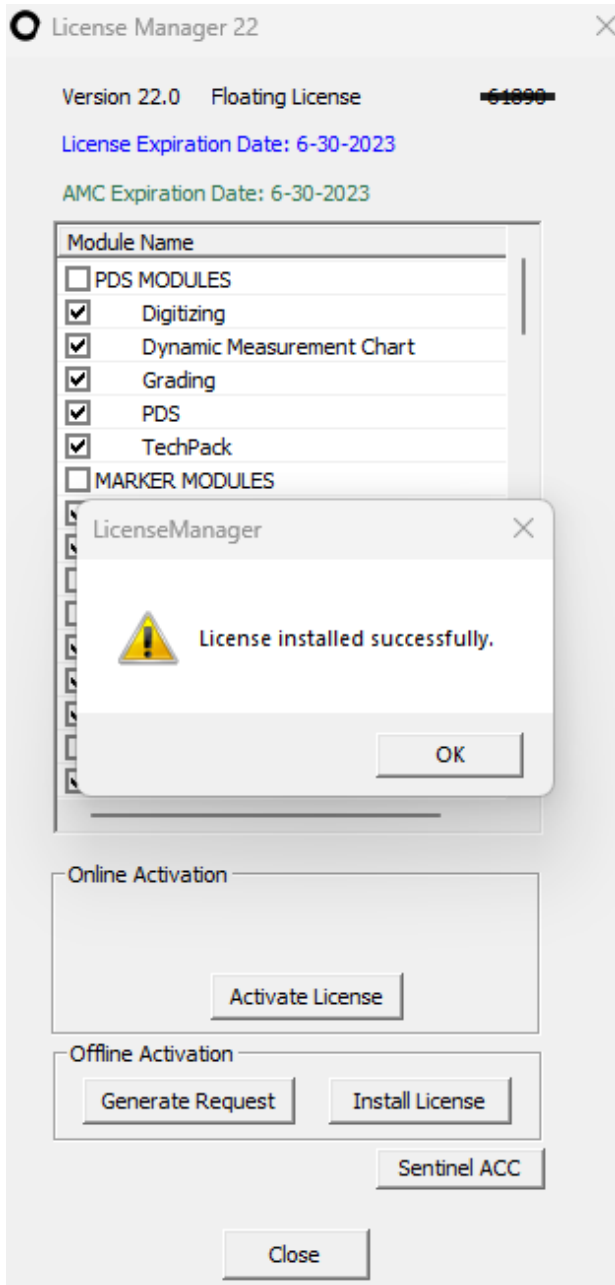


4. If you are using hardware (a physical) key, you can skip to step 6.
5. In the **Software Key** area, enter the **Product Key** string you received from Optitex:



6. Click **Activate License**.

The activation is processed. The following message appears:



7. Click **Ok**. License information is updated accordingly.
8. Click **Close** to close the License Manager.



**Note:** if you cannot use online activation (no direct internet connection, or security issues) switch to **Offline Activation**. Go [here](#) and look for the instructions for **Offline installation**.

## Configuring Remote Workstations

Once you have installed and activated Optitex, you can now configure a remote workstation.

This section contains advanced network licensing information and configuration.

### The License Server

- The license server is the computer available on the network, on which the network license key is installed.
- This computer distributes the licenses concurrently (at the same time) to the clients via the network, listening to the default port: 1947.
- The server can provide licenses following the license key activation, based on the number of concurrent (floating) licenses available on the key.

### License Clients

- The clients need to have the Optitex software package installed.
- The clients get their licenses automatically if they are exposed to the license server via the network.
- In case the clients have a problem getting the license, because of subnets layout or for any other reason, they can be configured to access the server directly.
- The client gets an available license from the server. If all licenses are in use, the client will have to wait until a license is released.

### Managing and Controlling Your Licenses

The Thales run-time environment provides a web-based interface to monitor, control and configure your licenses: The [Sentinel Admin Control Center](#) (ACC). This is installed by the Optitex package but can also be installed on its own.

Using this interface, you can:

- Verify that your license key installation is intact.
- Verify the number of floating licenses.
- Configure network license server and clients.
- Monitor access and use of products, features and sessions.
- Control and end unneeded sessions.
- Apply license updates.
- And more...

### Accessing the Sentinel Admin Control Center (ACC)

The Sentinel ACC can be accessed on the server or on the client. It can also be accessed remotely if configured to allow it.



For more information, see: [http://localhost:1947/int/help/en/config\\_basic.htm](http://localhost:1947/int/help/en/config_basic.htm)

The default communication port of the ACC is port 1947. Unless configured differently, use this port number to access the ACC.

### To open the ACC:

1. Using any web browser, go to the URL: <http://localhost:1947>.

The ACC for the local machine opens:

**Sentinel Admin Control Center**

Admin Control Center Help

Welcome to the Admin Control Center. This application enables you to manage access to software licenses and Features, to control detachable licenses.

Note: You can select the language in which Admin Control Center is displayed from the bottom of the **Options** pane.

> The Admin Control Center enables you to monitor the following:

- All the Sentinel protection keys that are currently available on the network server, including their identity, type, and location
- The number of users currently logged in to a protection key, and the maximum number of users allowed to be simultaneously logged into that key
- The Features to which each protection key allows access, and any restrictions that apply to the Feature
- The users who are currently logged into a specific protection key, including detailed login information

Note: SL UserMode keys are only displayed for the local (Windows) machine. SL UserMode keys are not displayed when the configuration parameter `SLUserModeKeys` is set to `False`.

> You can perform actions, such as:

- Detaching a license from the network and attaching it to your machine or a different recipient machine
- Cancelling a detachable license prematurely
- Installing an update to a license on a key that is visible in Admin Control Center

> You can implement and manage cloud licensing.

> You can make basic configuration changes, including:

- Setting the display refresh time
- Configuring access permissions from a client machine to a remote server, and configuring a server to allow it to be remotely accessed
- Defining values for Products with detachable licenses

> The Diagnostics page enables you to view system information related to the current Sentinel License Manager, and to generate reports.

*Related Topics*

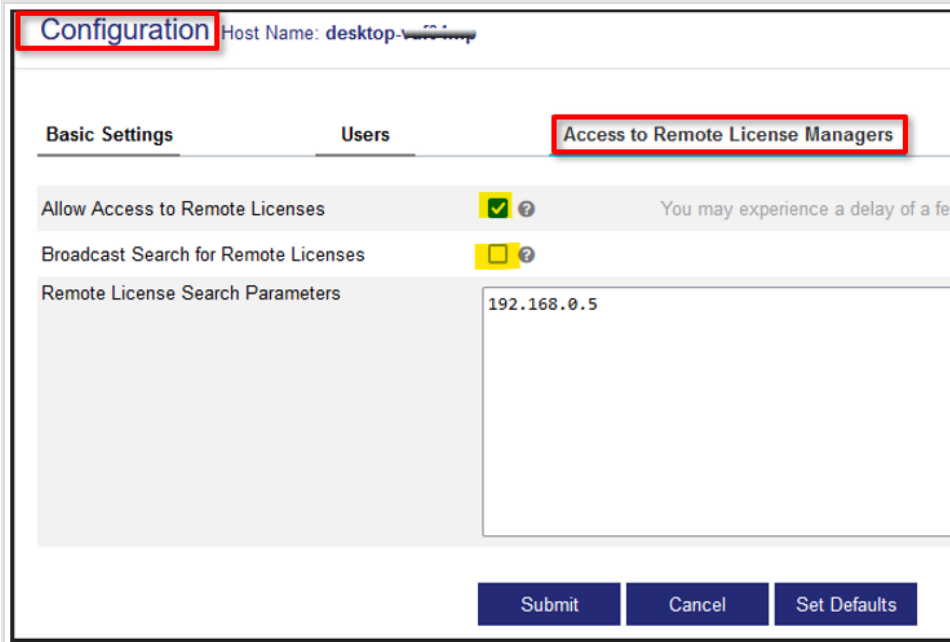
- Security Considerations
- Cloud Licensing
- Detaching Licenses - Overview
- Sentinel Keys
- Diagnostics

2. Select an option from the menu on the left to view/configure/monitor your licenses.
3. More information can be found in their [Online Help](#).

Whenever clients are having trouble reaching the license server, because of subnets layout or any other reason, it is recommended to point the licensing clients directly to the server.

### To designate a specific server:

1. On the client [open](#) the ACC.
2. From the **Options** menu, select [Configuration](#).
3. On the **Configuration for Sentinel License Manager on [Computer\_name]** page, select the [Access to Remote License Managers](#) tab.
4. Clear the **Broadcast Search for Remote Licenses** checkbox.
5. In the **Specify Search Parameters** box, enter the server computer name or IP address.
  - If more than one server is available put each in a separate line.



### Applying One Client's Settings to Multiple Clients

With a large-scale network licensing environment, it may be easier to configure one client successfully first and then apply the same settings to all the clients.

This is done by using the **hasplm.ini** file. You can copy it from the previously configured client and replace the existing file for other clients.

#### *To configure multiple clients:*

1. On the successfully configured client go to: *C:\Program Filesx86\Common Files\Aladdin Shared\HASP.*
2. In this folder, copy the **hasplm.ini** file.
3. Replace this file in all clients using the same configuration.

### Advanced Nesting License Keys runtime Installation

If **Nesting Pack** was included in your [Custom Setup](#), both **Nest ++ pro** and **Nest ++ 2** Systems are installed silently. No user intervention is required.



## Separate Installation Packages

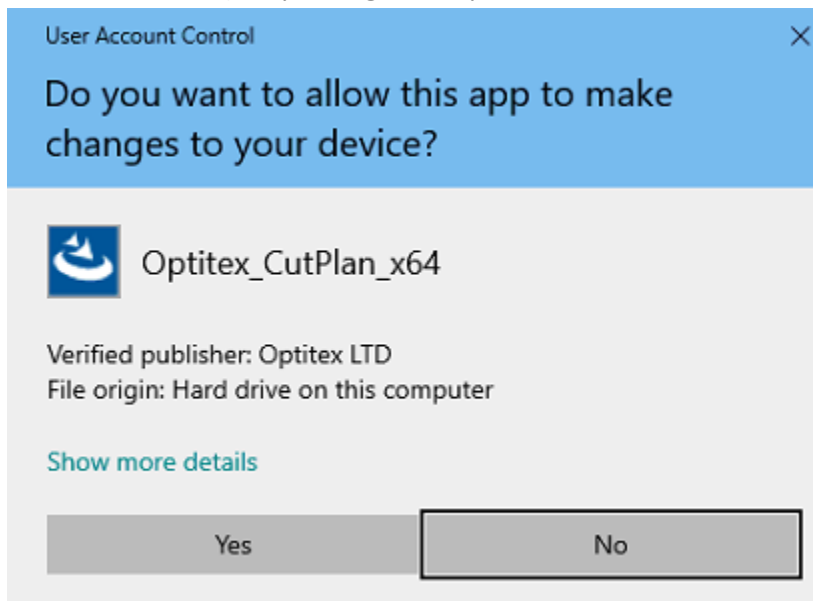
- **CutPlan:** (requires additional license)
- **2DPlugins** – These are extra add-ons (dll files) that can be added to the Optitex program.
- **Runway Viewer** – This is a viewer that allows you to view 3D PDS files without having to open them via Optitex.
- **Optitex Viewer** – This is a viewer that allows you to open PDS files and view them, as well as view and plot MRK files.
- **SDK**

## Installing CutPlan

CutPlan is a program that allows you to optimize your cutting operations. You need an additional key to work with the CutPlan. Please contact your Optitex representative for more information.

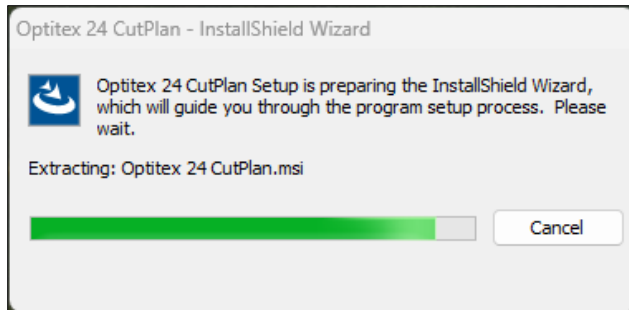
### *To install CutPlan:*

1. Run the downloaded CutPlan setup file. (recommended: right click and select **Run as Administrator**). Depending on the permissions, the user account control dialog may appear:

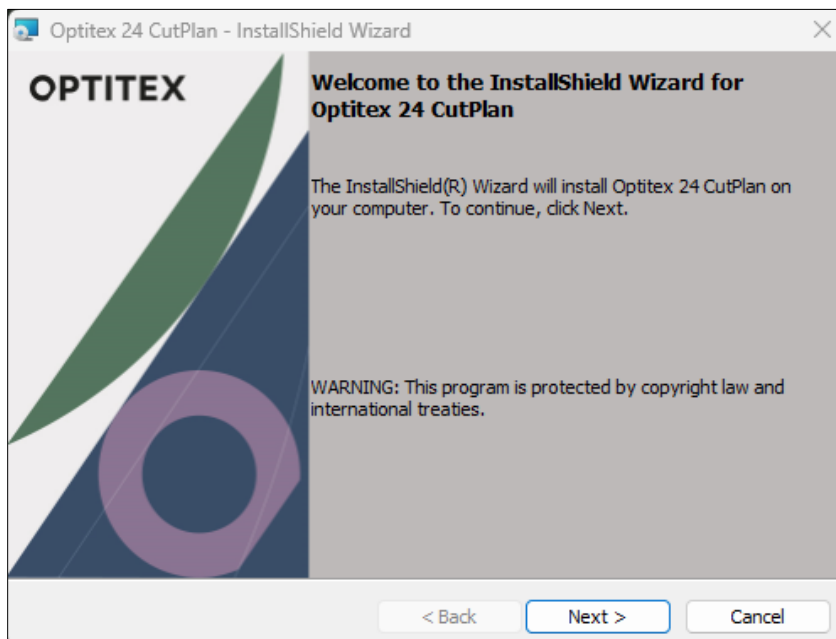


2. Click **Yes**.

The CutPlan InstallShield Wizard dialog appears and all the files are extracted to your machine:



Once the files have been extracted, the CutPlan wizard appears:



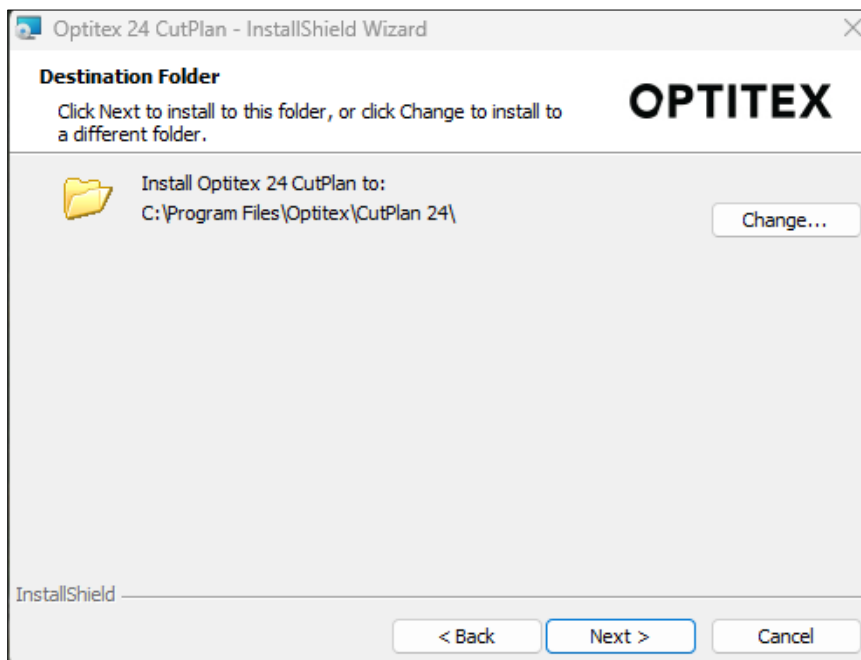
3. Click **Next** to begin the installation procedure.

The **License Agreement** dialog appears. You must accept the terms and license agreement to continue installing.

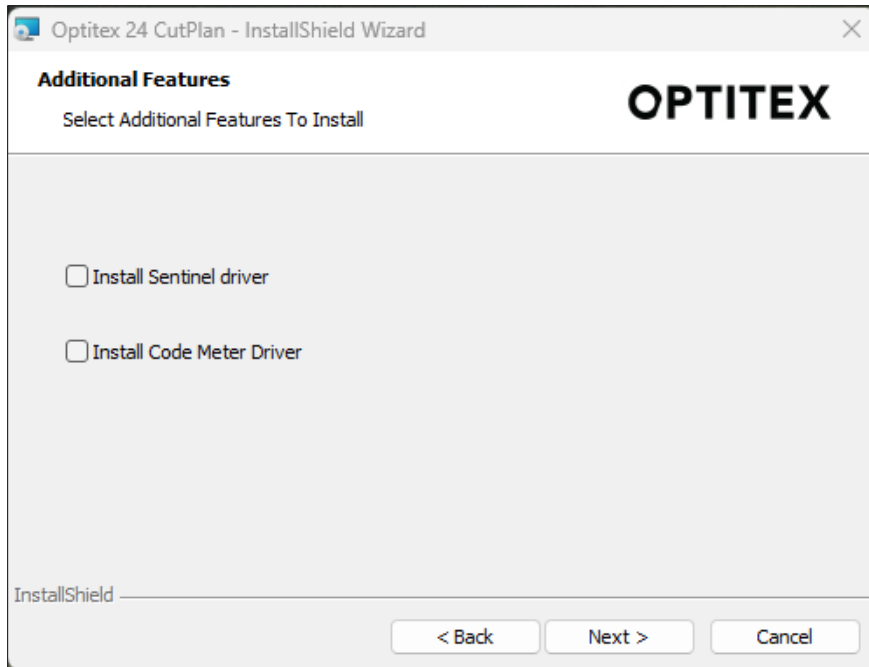


4. Select the **I accept the terms in the license agreement** radio button, then click **Next**.

The **Destination Folder** dialog appears allowing you to define the location of the CutPlan's files:



5. To change the file location, click **Change**. Otherwise click **Next** to continue.

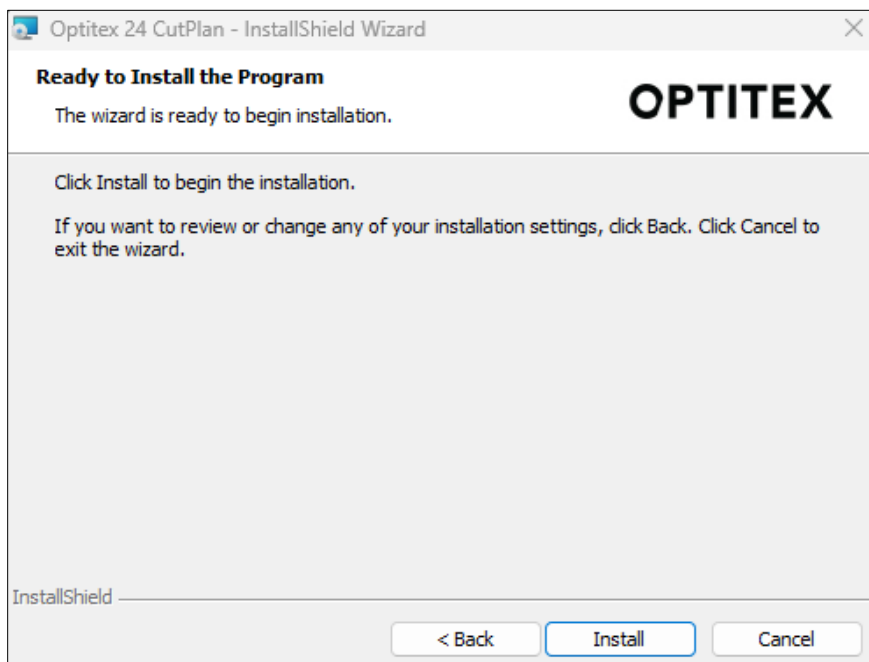


6. If you want to install the **Sentinel Driver** or **Code Meter Driver**, select the appropriate checkboxes and then click **Next**.

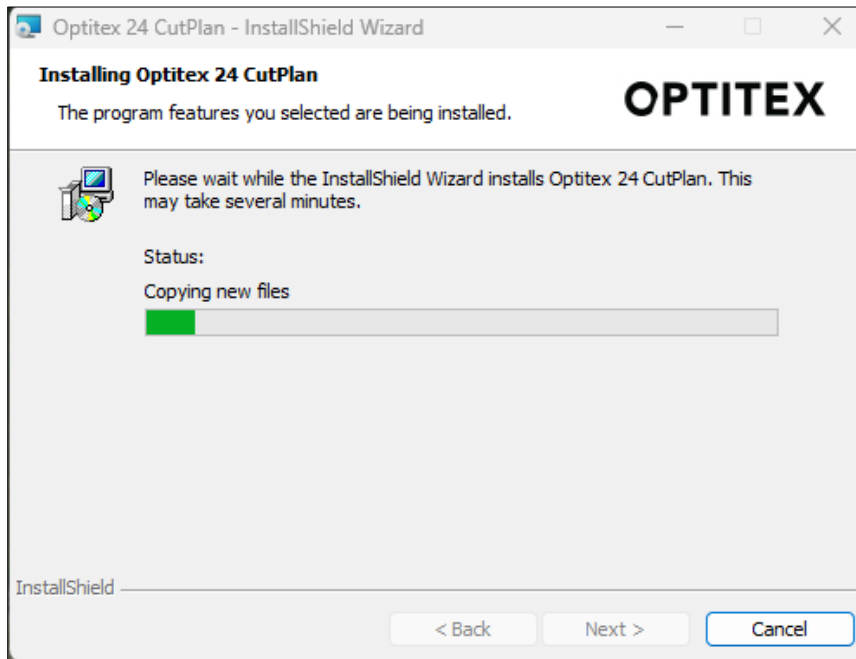


**Note:** These are needed only if you use Cutplan with Advanced Nesting, for which additional license is required.

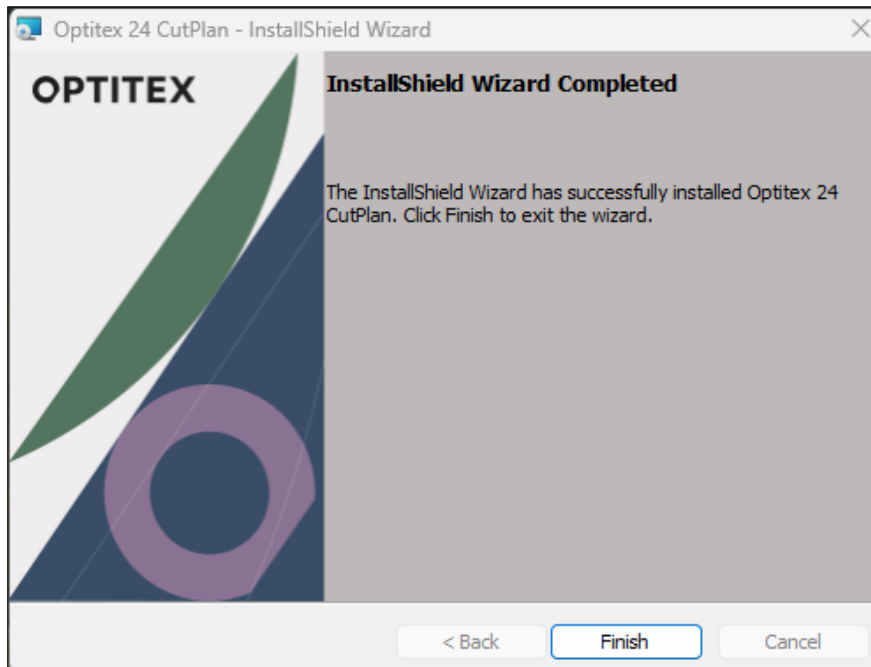
7. Click **Next** to install CutPlan.



The system starts the installation process. You can see the progress of the installation in the **Status** area.

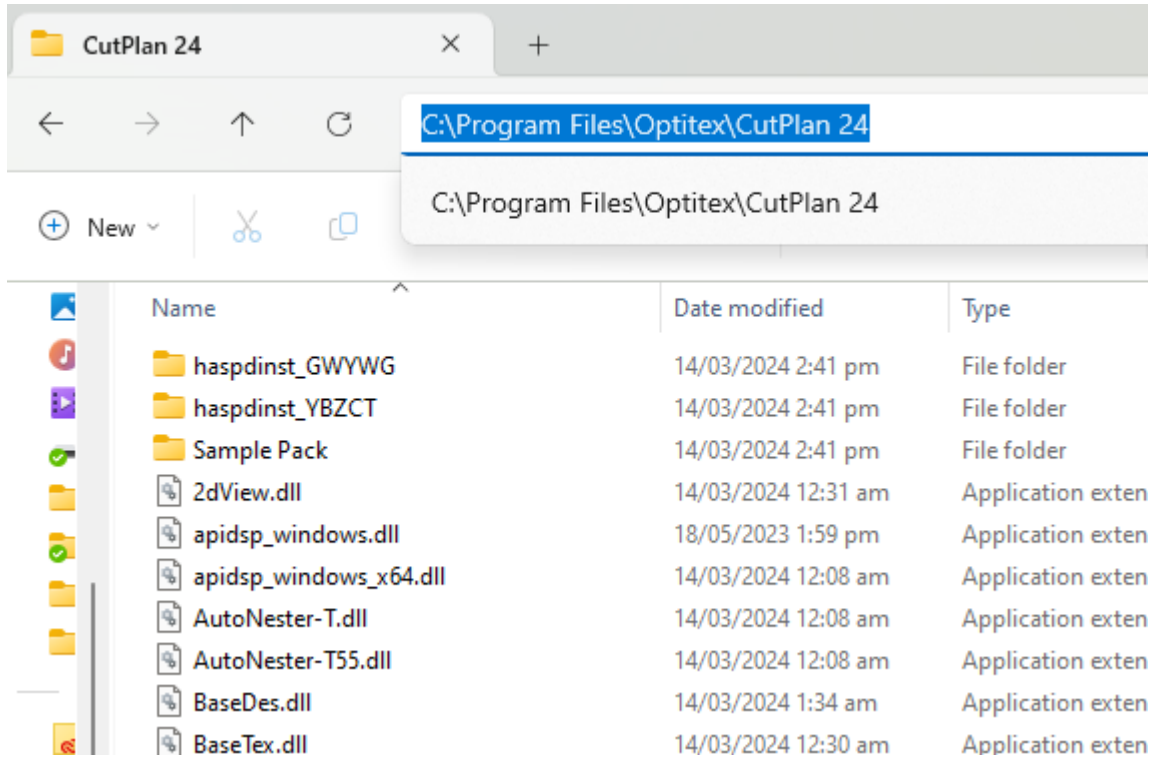


Once the installation is complete the **InstallShield Wizard Completed** dialog appears:



8. Click **Finish** to close the wizard.

The CutPlan files are installed in your computer (depending on the type of installation and designated folder):



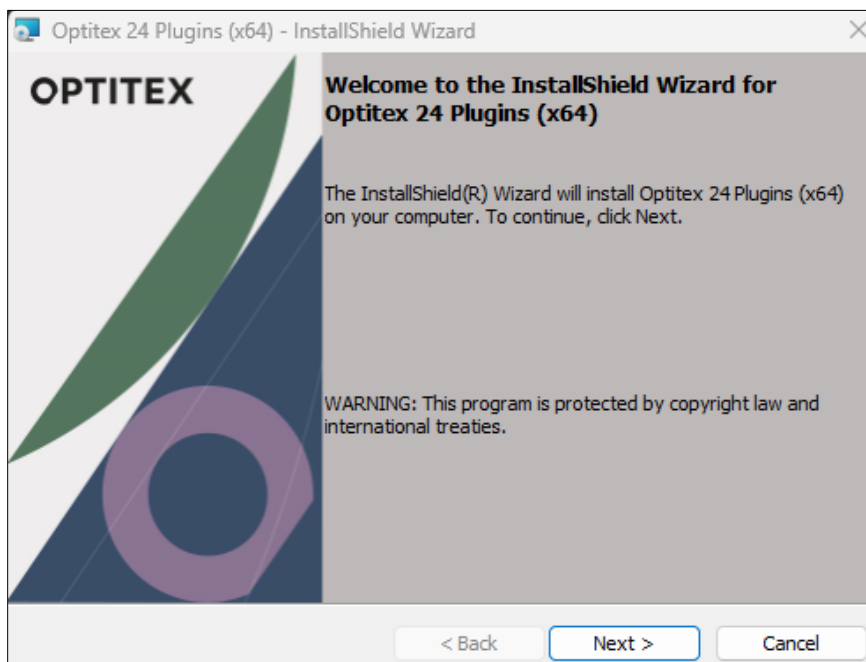
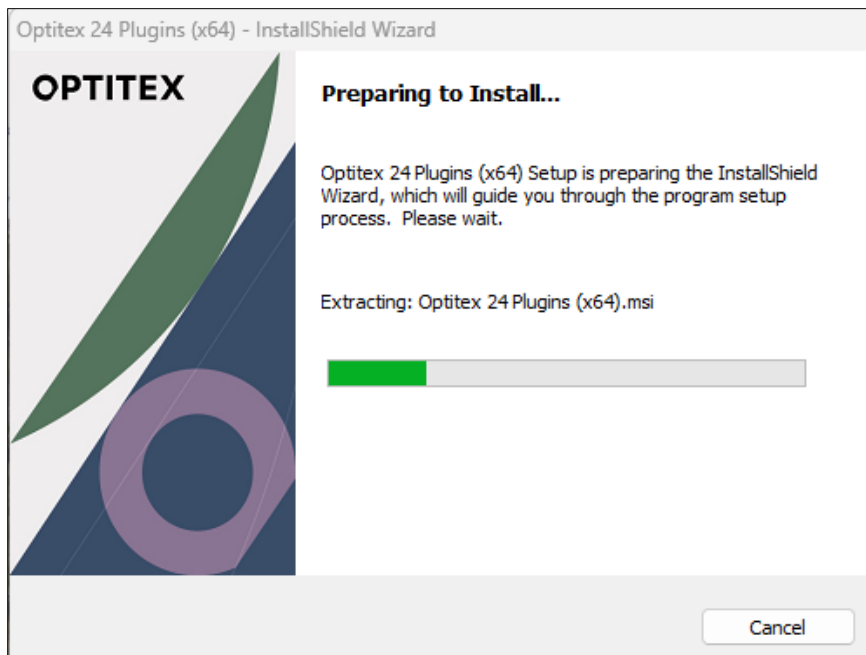
## Installing Optitex 2D Plugins

Optitex offers a set of plugins that can be added to the software; for example Marker Viewer, ASTM converter, etc.

### *To install Optitex Plugins:*

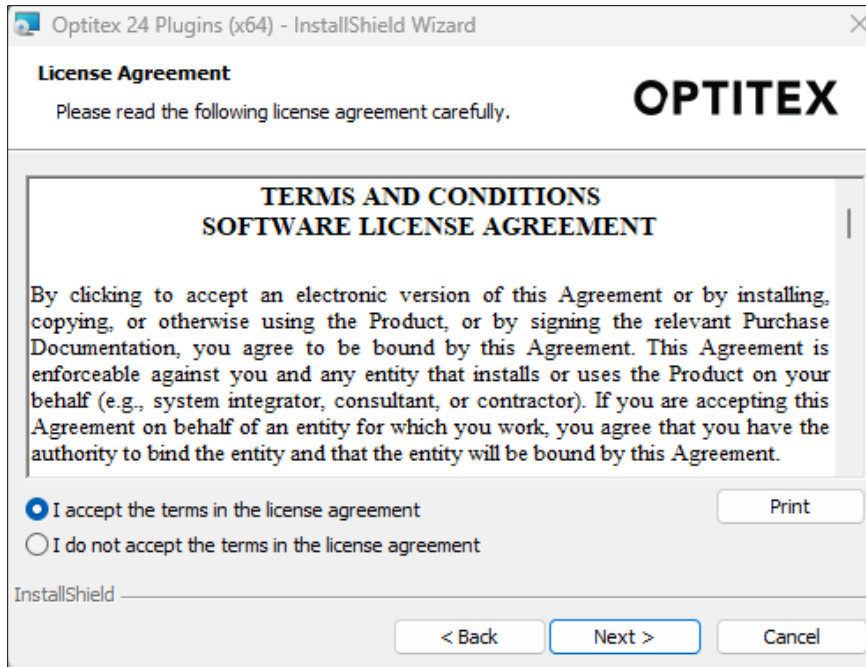
1. Run the downloaded Plugin file. (Recommended: right click and select **Run as Administrator**).

The **Plugins InstallShield Wizard** dialog appears and all the files are extracted to your computer.

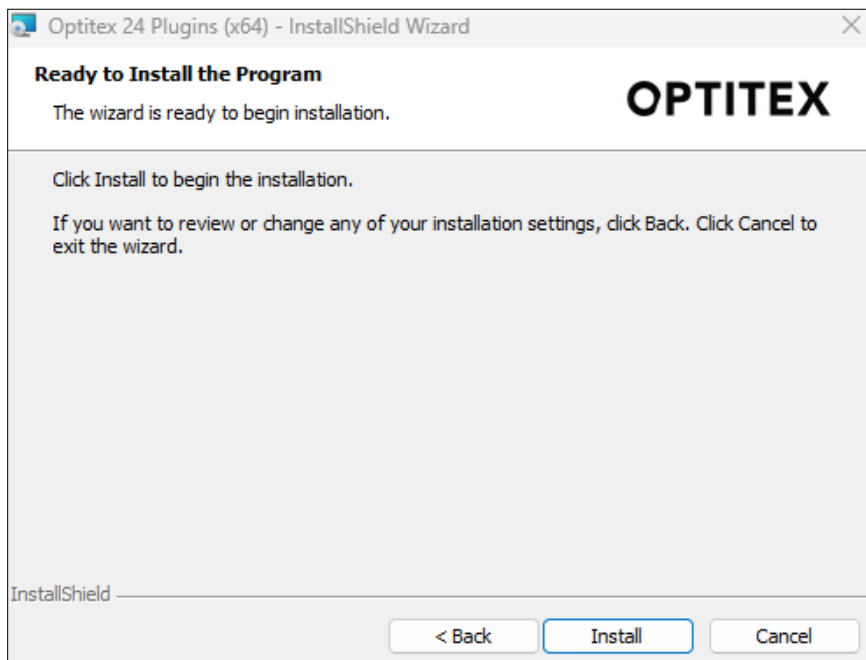


2. Click **Next** to start the installation procedure.

The **License Agreement** dialog appears. You must accept the terms and license agreement to continue installing.

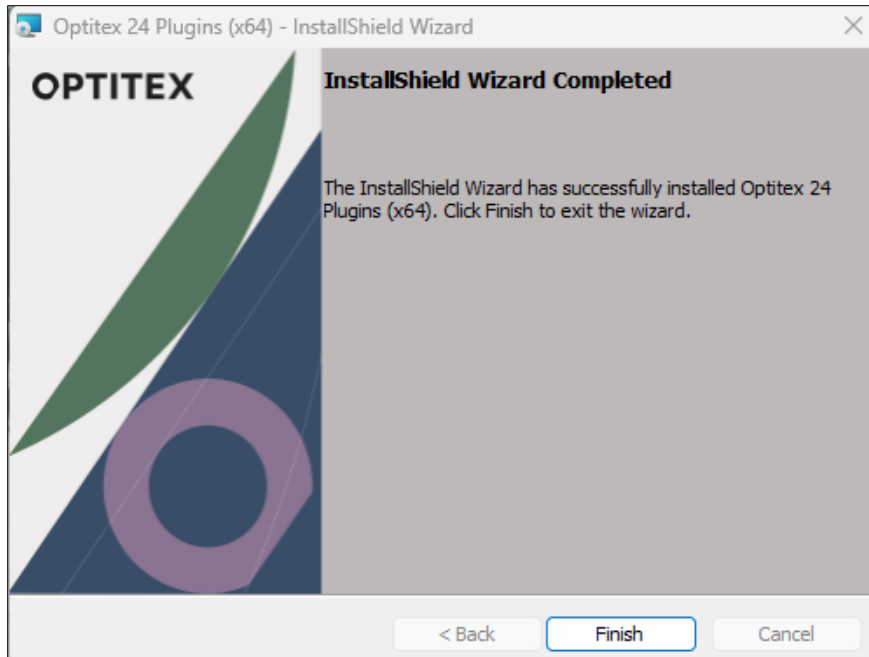


3. Select the **I accept the terms in the license agreement** radio button, then click **Next**.
4. Click **Install** to begin the installation:



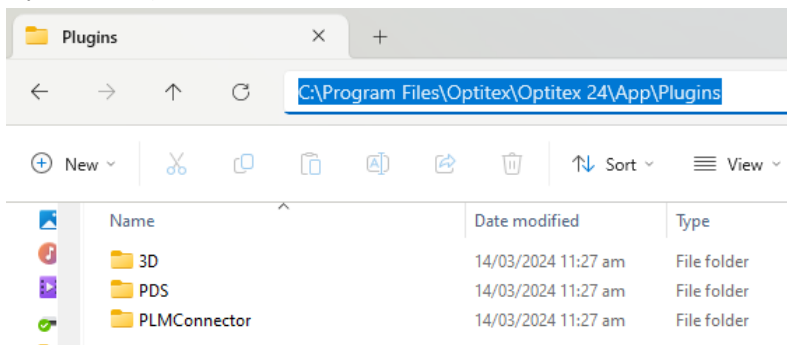
Once the installation is complete the **InstallShield Wizard Completed** dialog appears:





5. Click **Finish** when you are done.

All of the plugins are added to your Plugins folder (depending on your designated location for your Optitex files):



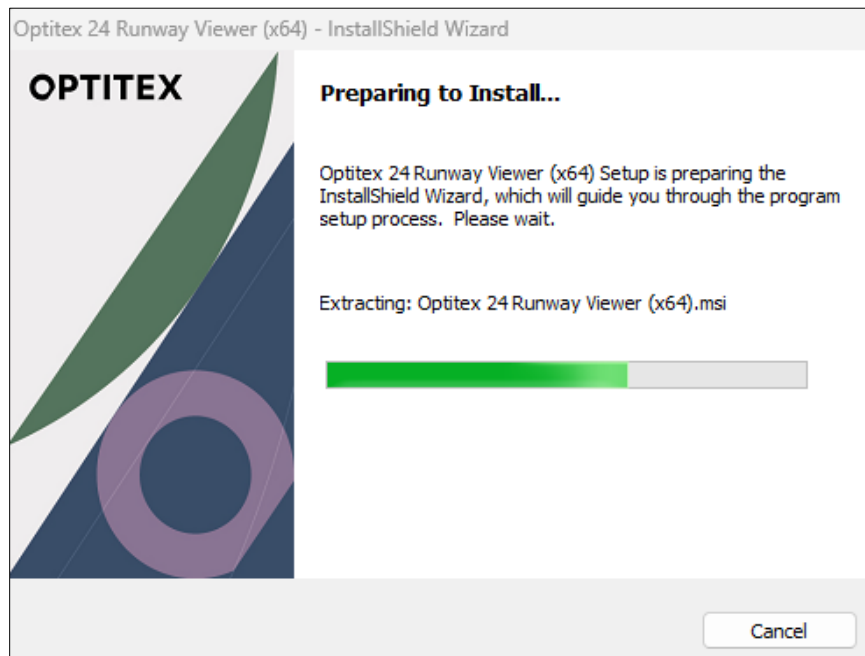
## Installing Runway Viewer

Runway Viewer is included in the full package but can also be installed as a separate application on any computer. No license is needed.

Once you install the Runway Viewer a desktop icon is created so you can easily access it.

### *To install the Runway Viewer:*

1. Run the downloaded installation file.



2. Click **Next** to start installing.

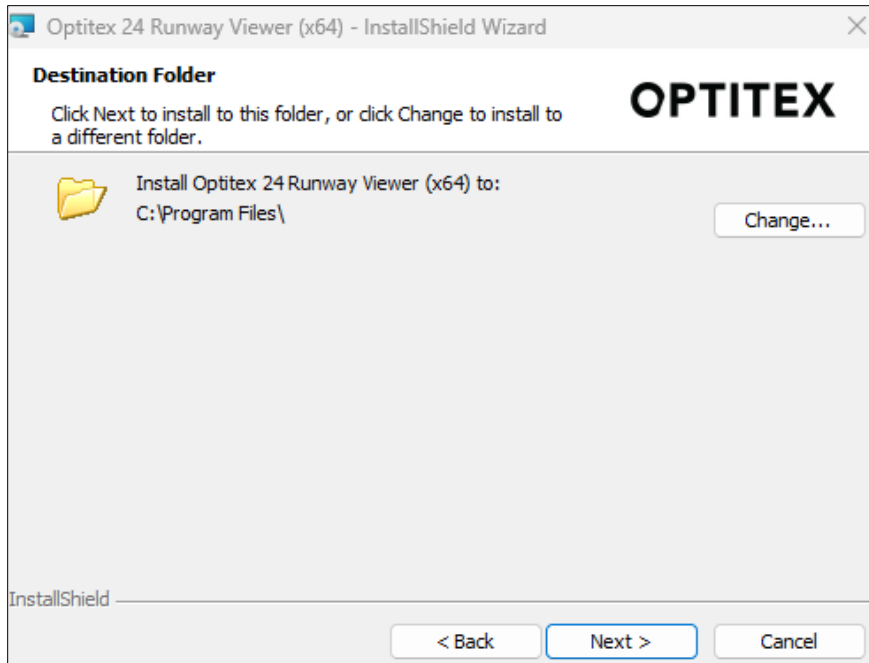


The **License Agreement** dialog appears.

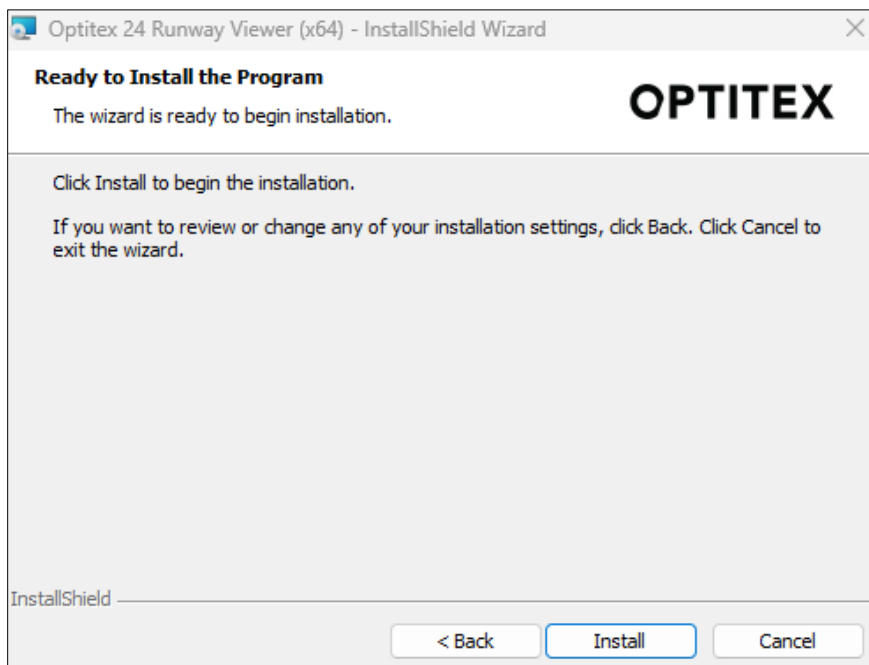


You must accept to continue with the installation.

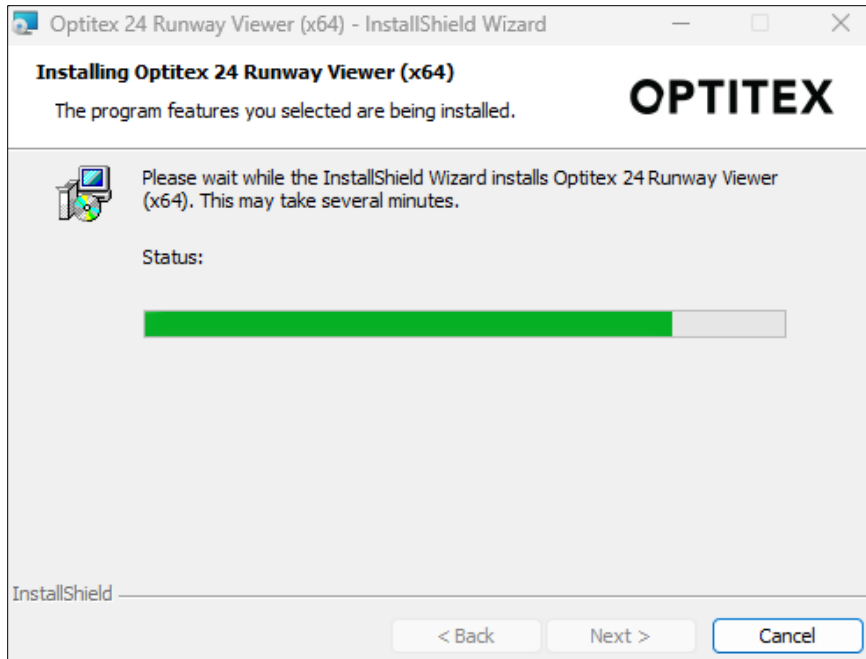
3. Click **Next** to continue.
4. To change the destination folder where all the setup files will be saved, click **Change**; otherwise click **Next**.



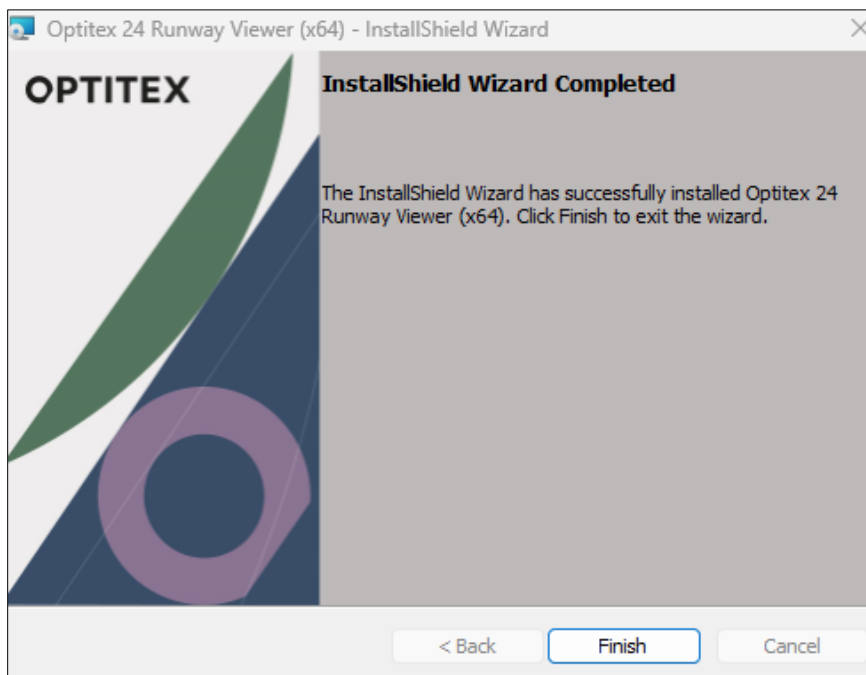
5. Click **Install** to start the installation.



6. Wait for the features to be installed.



8. Once the installation is complete click **Finish**.



The Runway Viewer files are installed in your Optitex folder (Default, if not changed by you):  
**C:\Program Files\Optitex\Runway Viewer 23**

## Installing Optitex Viewer

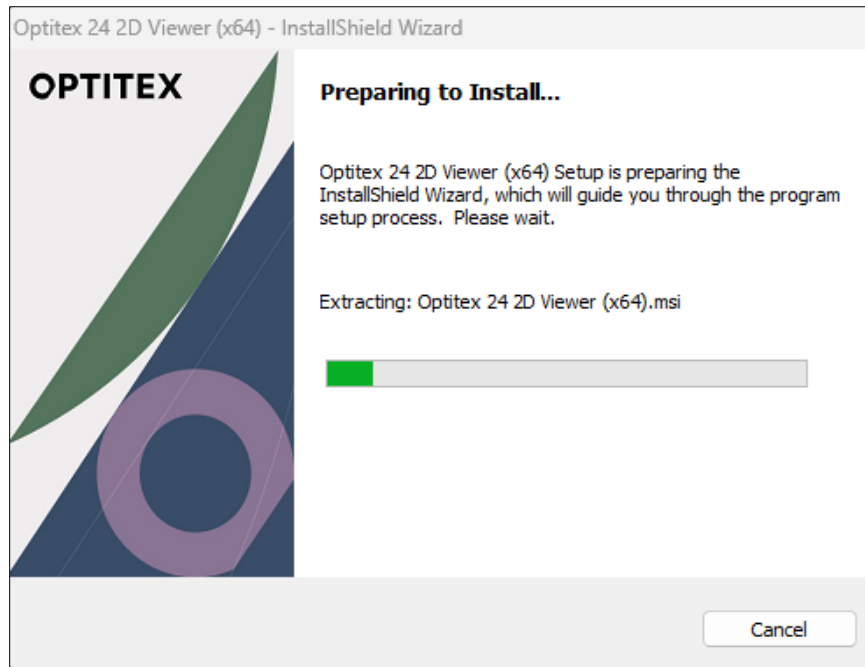
Optitex Viewer allows you to view and plot PDS and Marker files without an Optitex license key.

Note: Some additional functionality (e.g. tolerance check, validation mode) is available that requires a license. For more information see:

[Optitex Viewer Help](#)

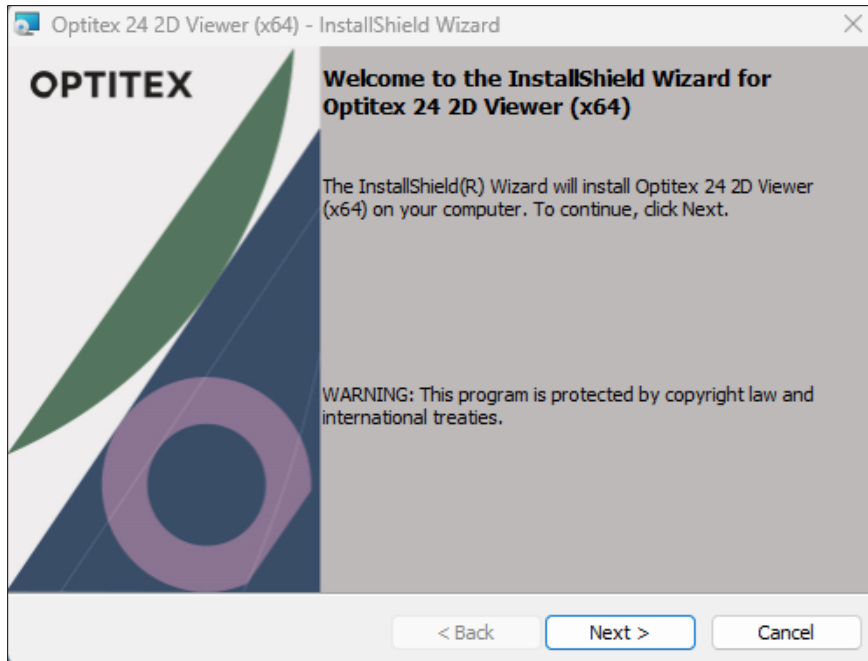
*To install the Optitex Viewer:*

1. Run the downloaded Optitex Viewer file. (recommended: right click and select **Run as Administrator**).

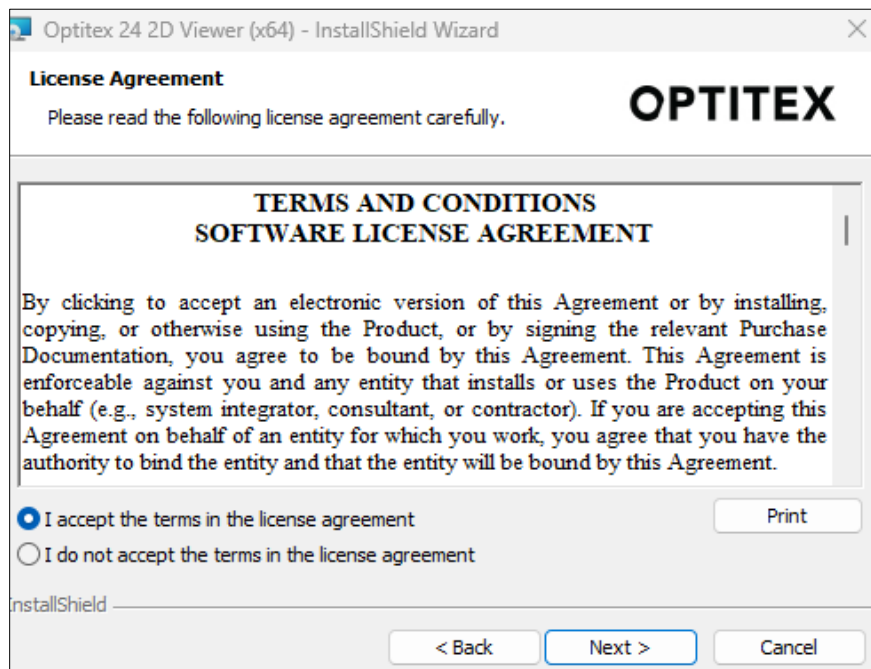


The **Optitex Viewer InstallShield Wizard** dialog appears and all the files are extracted to your computer.

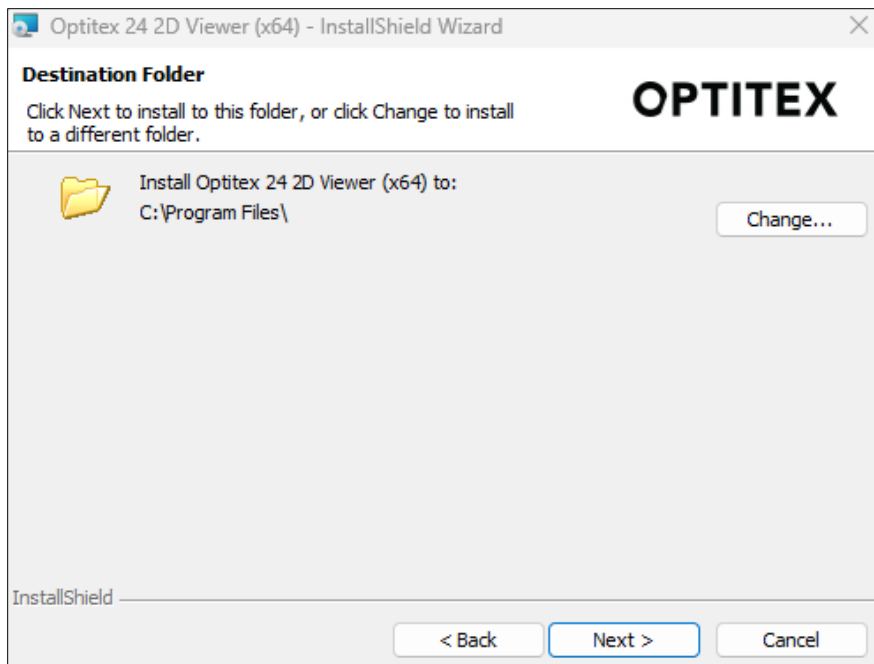
2. Click **Next** to begin the installation process:



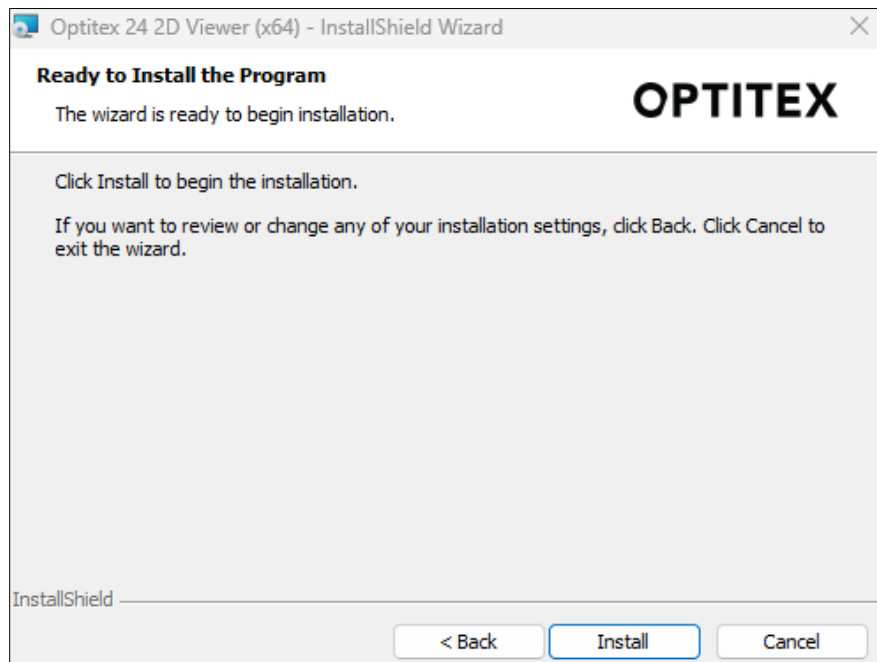
The **License Agreement** dialog appears. You must accept the terms and license agreement to continue installing.



3. Select the **I accept the terms in the license agreement** radio button, then click **Next**.

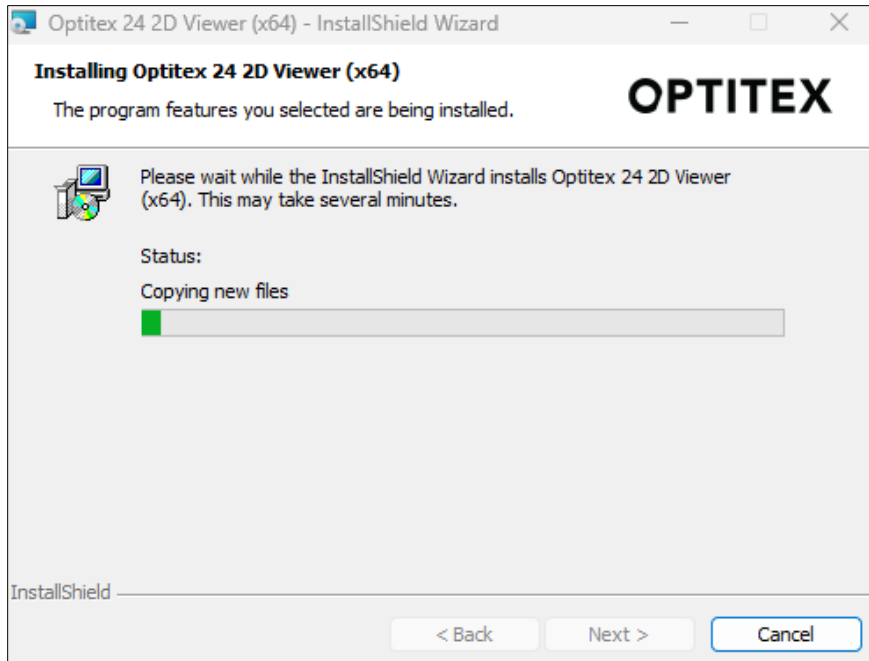


4. If you want to change the location where all the files are saved, click **Change**. Otherwise click **Next** to continue.
5. Click **Install** to start installing.

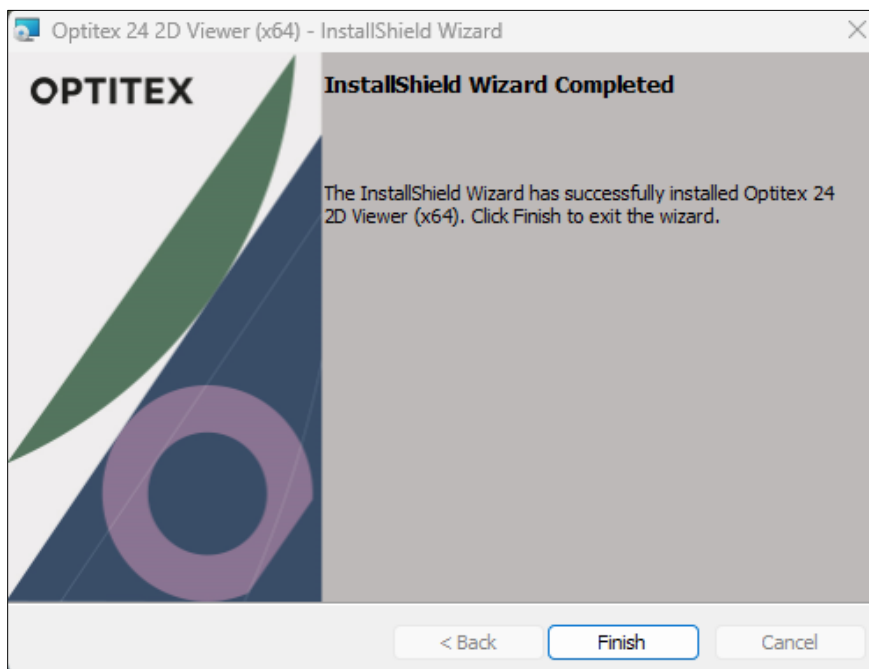


The installation process begins. You can see the progress of the installation in the **Status** area.





Once the installation is complete the **InstallShield Wizard Completed** dialog appears:



6. Click **Finish** to close the wizard.

The Optitex Viewer is installed in your Optitex folder (Default, if not changed by you):

**C:\Program Files\Optitex\Optitex Viewer 23**

## Uninstalling Optitex

If you no longer want Optitex on your computer, you can easily remove it via the Control Panel.

### *Uninstall to remove a main Optitex version.*

1. In the **Windows Control** panel, go to **Programs and Features** (or similar, depending on Windows).

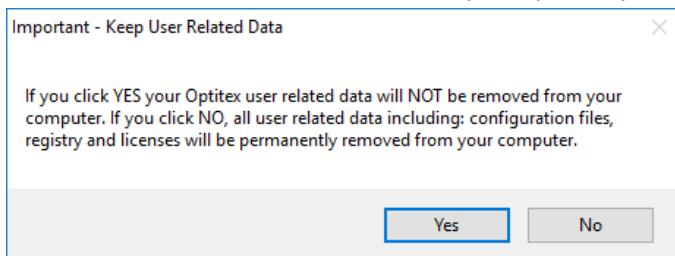
The **Uninstall or Change a Program** dialog opens.

2. From the **Installed Versions** list, select the Optitex version you want to uninstall.
3. On the menu, select **Uninstall**.

A confirmation message appears.

4. Click **Yes** to proceed.

Before the software is uninstalled completely an important message appears:



Here you must decide if you want to keep your user data, including configuration files, registry, and licenses. If you click **YES**, the user data will not be removed. If you click **NO**, the user data will be removed.

5. After you select an option, Optitex is removed from your computer and a successful message appears.



#### **Note:**

- Alternatively, you can select **Uninstall Optitex [Version#]** in the Optitex group in the Start menu.
- Removing one version will not interfere with other installed versions.
- Some elements need to be removed manually.

## Silent Installations

All Optitex installation packages support unattended installation via command line or other means by using MSI (Microsoft Software Installation) technology. Once the installation is complete desktop icons will appear along with the Optitex installation folder and all the appropriate files.



**Note:** It is recommended that a system administrator be involved in setting up the installations.

### Before the Installation

1. Verify that your system specifications are within the [recommended system requirements](#).
2. Check that all prerequisites are installed.
3. Download and unzip the MSI file and have it ready.

### General Syntax for Silent Installations

To install an Optitex product silently use the following syntax:

```
msiexec /i <<path to file>> /qn
```



**Note:** To run the setup with a specific feature: ="<feature name>, <feature name>..."

We support the following features (Case sensitive):

Optitex\_Suite

NestingPack

TeamViewer

For example:

```
msiexec /i "<MSI_PATH>\Optitex_Suite_23.2.382.0.msi" /qn ADDLOCAL=Optitex_Suit,TeamViewer /log "<LOG_PATH>\log.txt"
```

**\*\*This will install the full setup (Optitex\_Suite) with Team Viewer.**

If you want to install all features, add all of them.

Example:

```
msiexec /i "<MSI_PATH>\Optitex_Suite_23.2.382.0.msi" /qn ADDLOCAL=Optitex_Suit,TeamViewer,NestingPack /log "<LOG_PATH>\log.txt"
```

or

```
msiexec /i "<MSI_PATH>\Optitex_Suite_23.2.382.0.msi" /qn ADDLOCAL=ALL /log "<LOG_PATH>\log.txt"
```

\*\*This will install the full setup, Nesting Pack and Team viewer.

### **To install Optitex via MSI:**

1. Open **CMD** (run CMD as Administrator) Or use **Run**.
2. Enter the following command:

```
msiexec /i "path to file" /qn
```

3. To add the **Nesting pack**, enter the following command:

```
"msiexec /i "path to file" /qn ADDLOCAL=Optitex_Suit,NestingPack.
```

4. To add **TeamViewer**, enter the following command:

```
msiexec /i "path to file" /qn ADDLOCAL=Optitex_Suit,TeamViewer.
```

5. To add a **log file**, add the following command:

```
/log "path_to_log_file"
```



**Note:** Run **Msiexec /help** for a list of the available parameters and options.

### **Installing a Service Pack (Update) Silently**

Optitex services packs are based on the Windows installer patch technology. It is possible to run a silent install of a patch using the following syntax:

```
"path to SP" /s /v /qn
```

© Copyright 1988-2023 by Optitex.

All rights reserved. All text and figures included in this publication are the exclusive property of Optitex, and may not be copied, reproduced, or used in any way without the express permission in writing from Optitex. Information in this document is subject to change without notice and does not present a commitment on the part of Optitex.